

Chronic Diseases 2011: Determinants of Health for an Aging Population

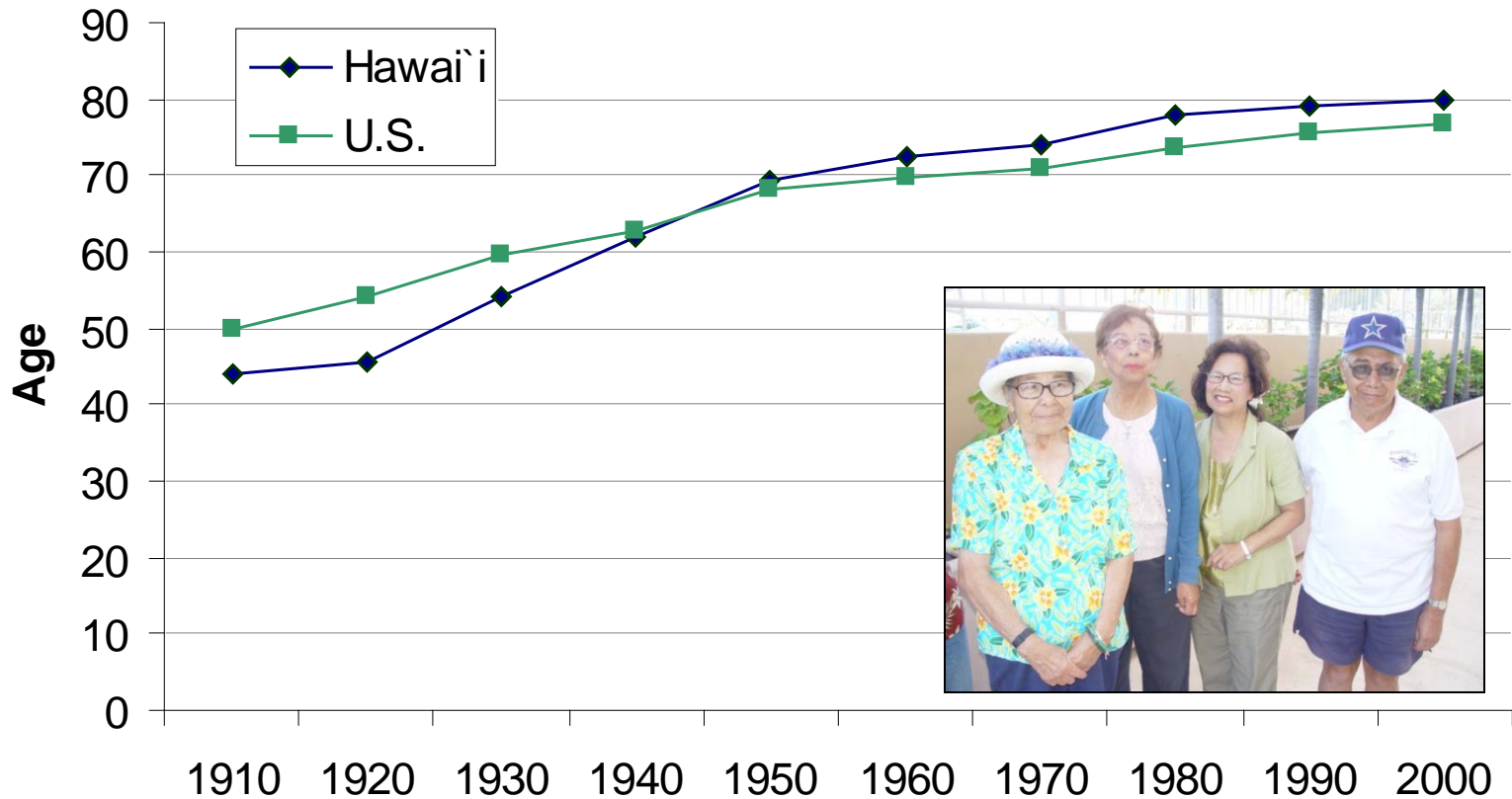
**Earl Bradbury, MPH, MSW
Chronic Disease Management and Control Branch,
Hawaii Department of Health**

**Presentation for the
Hawaii Pacific Gerontological Society Quarterly Meeting,
April 7, 2011**



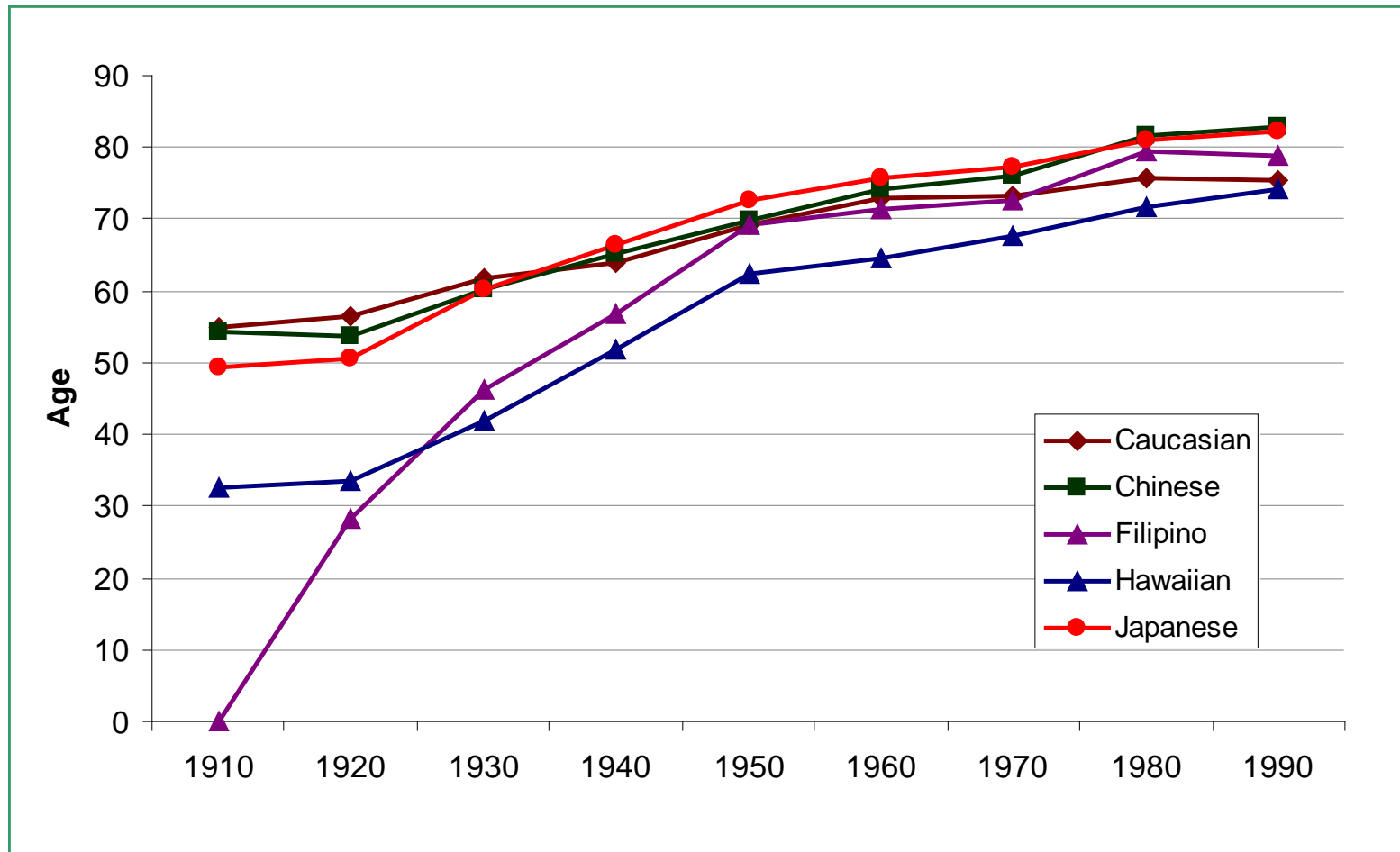
Hawai`i's Population is Aging

Life Expectancy at Birth, Hawai`i vs. U.S., 1920-2000



Source: Source: Hawai`i State Department of Business, Economic Development, and Tourism, The State of Hawai`i Data Book, A Statistical Abstract.; Centers for Disease Control and Prevention, National Center for Health Statistics, National Vital Statistics Reports.

Life Expectancy at Birth, by Ethnicity, Hawai`i, 1910-1990



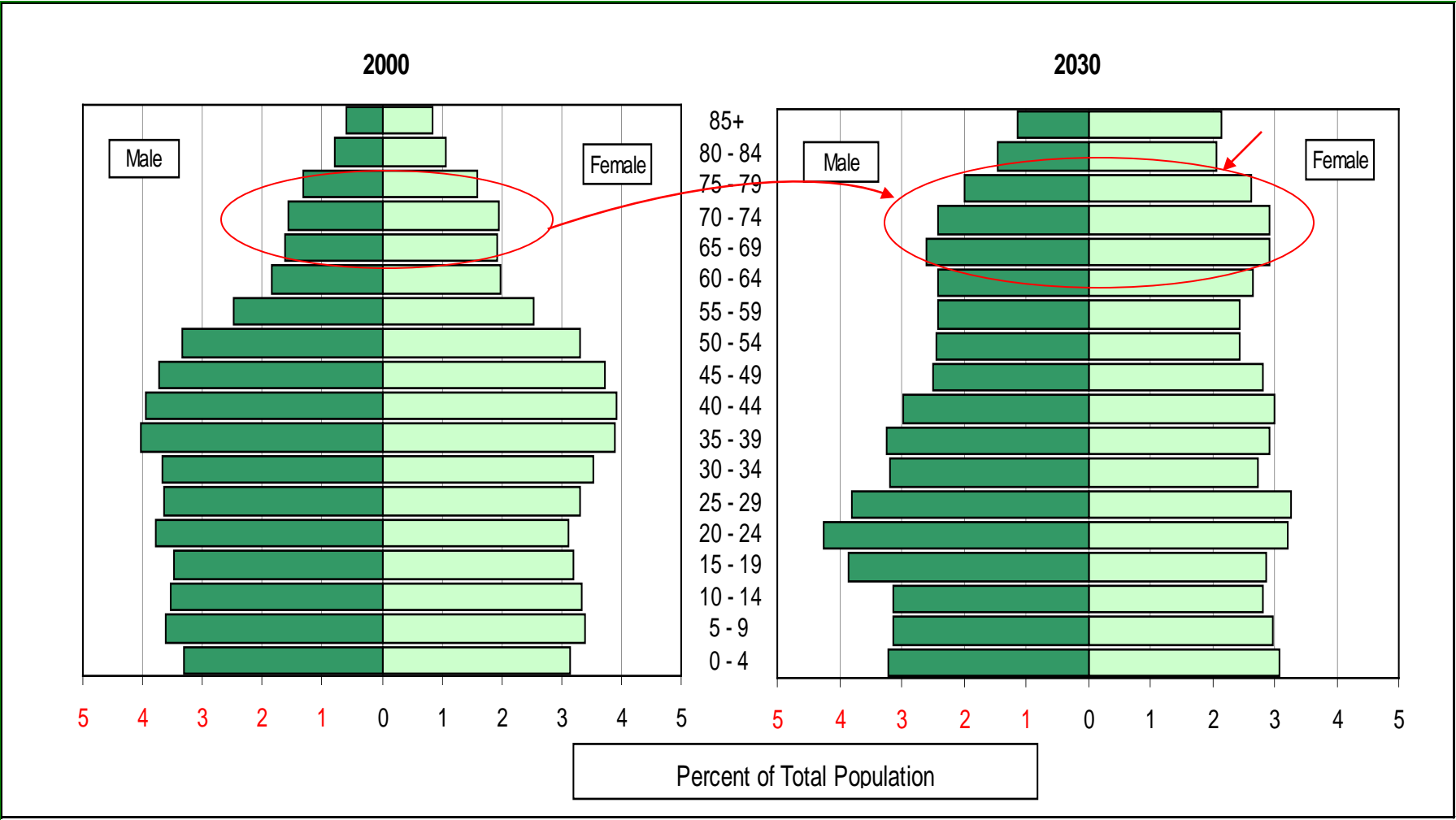
Source: Hawai`i State Department of Business, Economic Development, and Tourism, The State of Hawai`i Data Book, A Statistical Abstract.

Life Expectancy at Birth by County and Sex, 2005

Gender	Hawai`i	Honolulu	Kaua`i	Maui
Female	82.2	83.5	83.3	82.8
Male	77.2	78.2	78.1	78.4
Total	79.7	80.9	80.7	80.6

Source: Murray, C.J.L., C.M. Michaud, M.T. McKenna, and J.S. Marks, "U.S. Patterns of Mortality by County and Race: 1965-1994." Harvard Center for Population and Development Studies, 1998.

Population Pyramids for Hawai'i, 2000, 2030



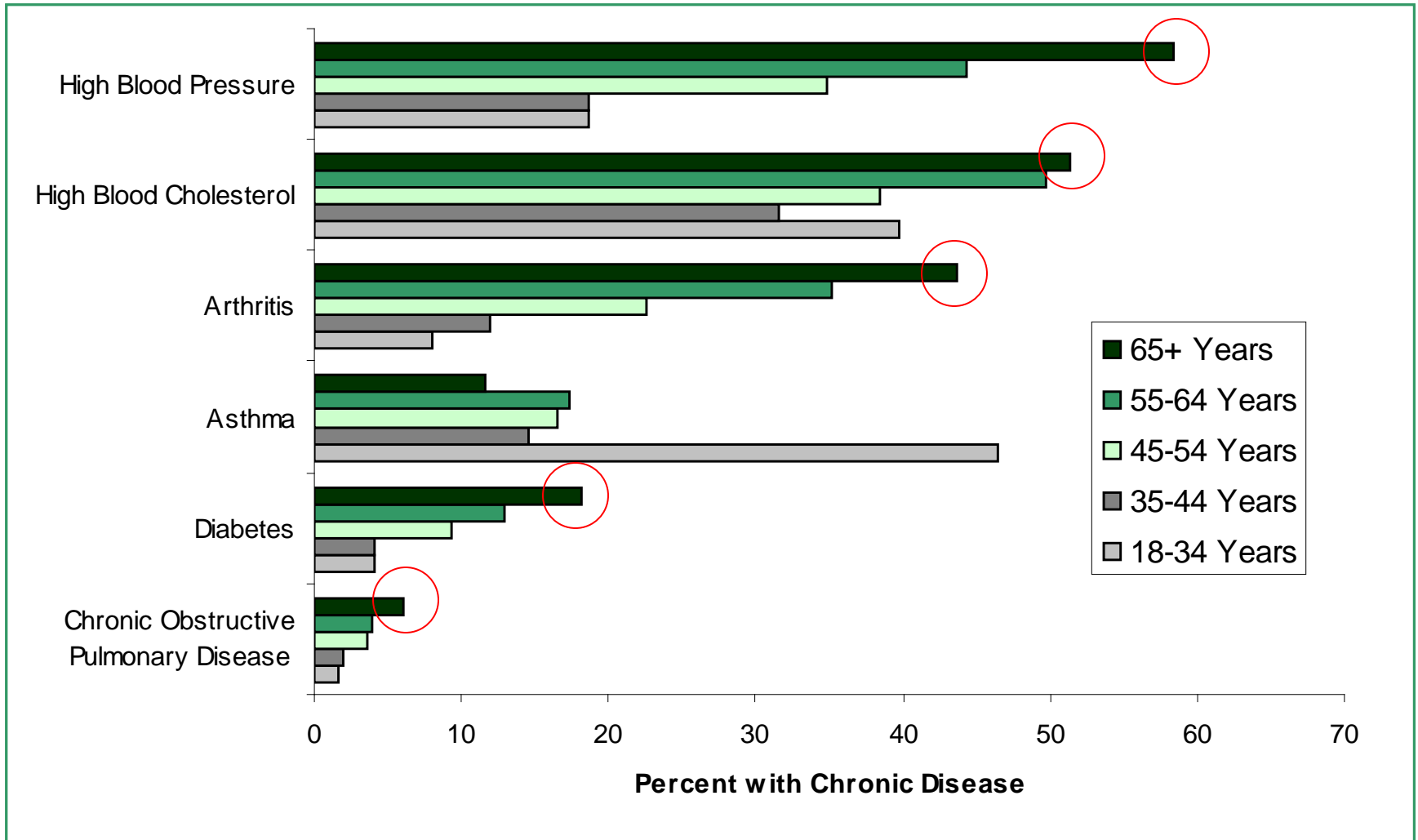
Source: U.S. Census Bureau, Population Division, Interim State Population Projections, 2005

Top Five Leading Causes of Death, Kupuna, Hawai'i, 1999 - 2007

	65 to 74 Years Old	75 to 84 Years Old	85 Years and Older
1	Cancer	Cancer	Cancer
2	Heart Disease	Heart Disease	Heart Disease
3	Stroke	Stroke	Stroke
4	Diabetes Mellitus	Chronic Lower Respiratory Diseases	Alzheimer's Disease
5	Chronic Lower Respiratory Diseases	Influenza/ Pneumonia	Influenza/ Pneumonia

Source: Hawai'i Department of Health, Office of Health Status Monitoring, Office of Vital Statistics.

Prevalence of Selected Chronic Diseases by Age, Hawai'i, 2008, 2009



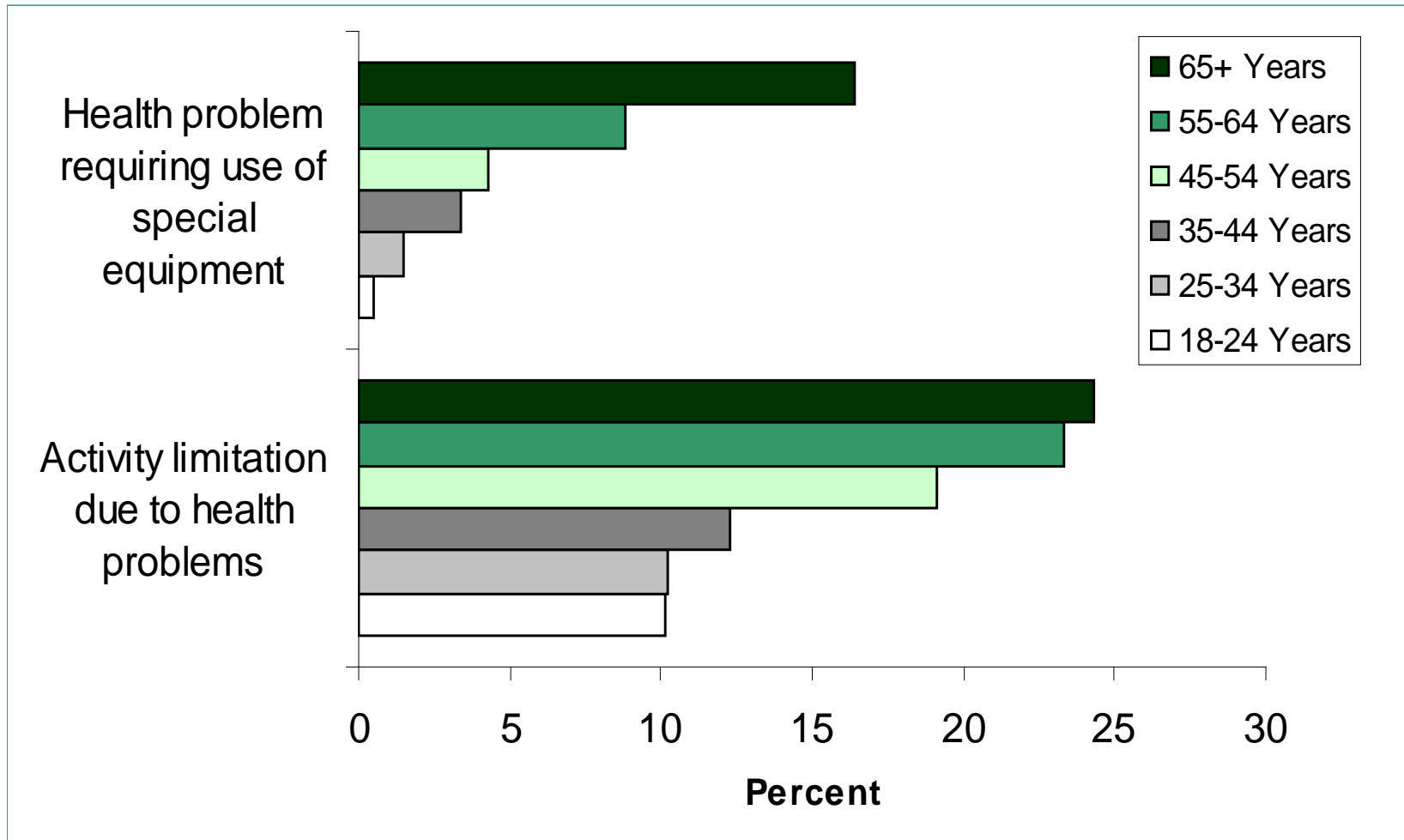
Chronic Disease = Shorter Life

Average Years Lost to Chronic Disease, 2009 (Provisional Data)

	Cancer	Diseases of the Heart	Diabetes	Stroke
STATE	8.5	2.7	2.1	1.0
White	9.1	1.7	2.5	-1.3
Hawaiian	12.4	11.5	9.0	9.9
Filipino	10.1	3.1	1.7	2.9
Japanese	3.3	-3.1	-2.9	-3.1
All Others	11.0	5.0	2.9	5.6

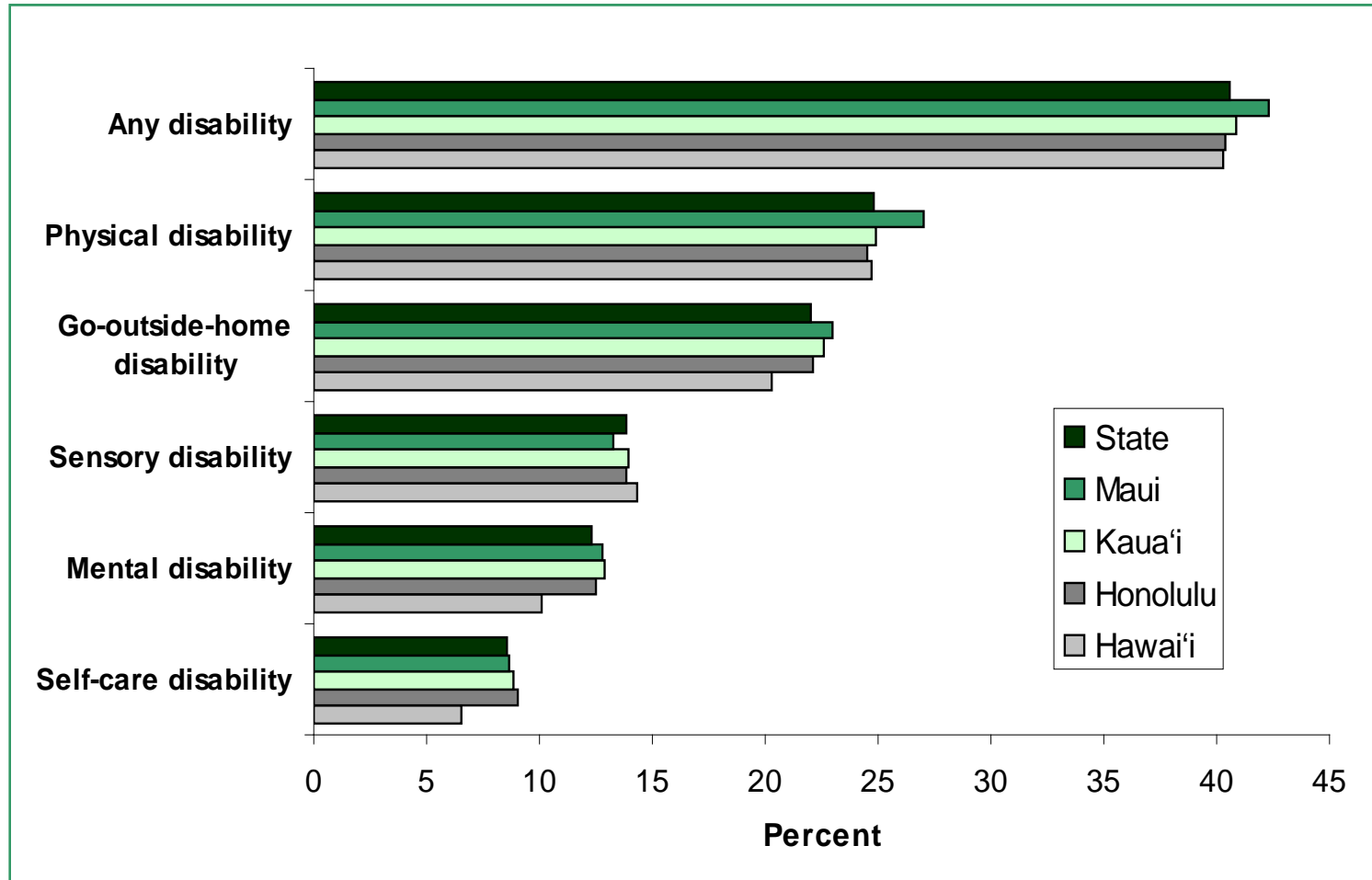
Source: Hawaii Office of Vital Statistics, Office of Health Status Monitoring.
Provisional Data: Estimates based on life expectancy in 2000 (Average 79.9 years).

Prevalence of Physical Disability by Age, Hawai'i, 2009



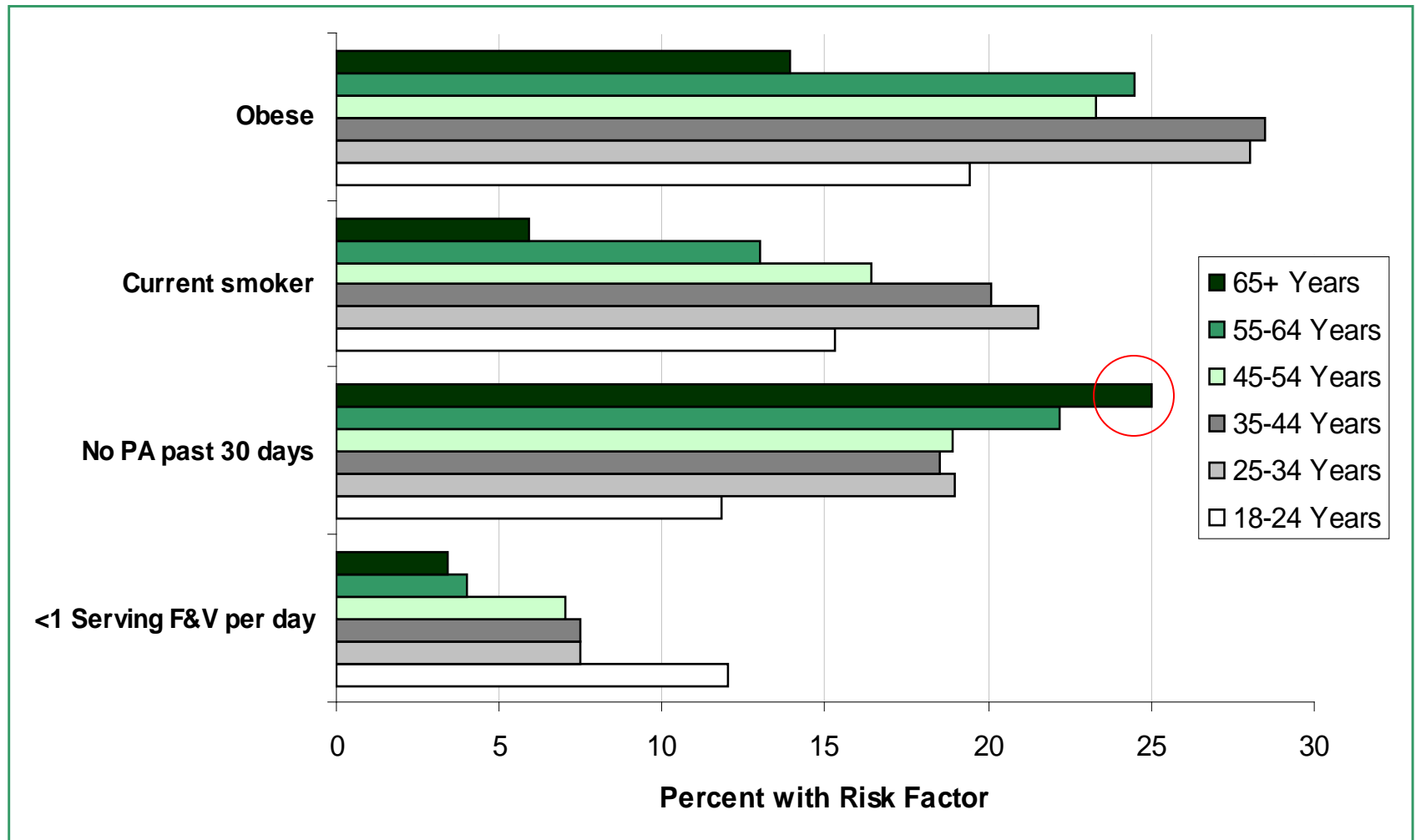
Source: Behavioral Risk Factor Surveillance System, 2009

Percent of population 65+ with Various Disabilities by County, Hawai'i, 2000



Source: U.S. Census Bureau. (2004, October). Census 2000 special tabulation on aging (STP 9), P35: Age by type of disability for the civilian non-institutionalized population 55 years and over.

Prevalence of Behavioral Risk Factors by Age, Hawai'i, 2008, 2009



Source: Behavioral Risk Factor Surveillance System, 2008, 2009

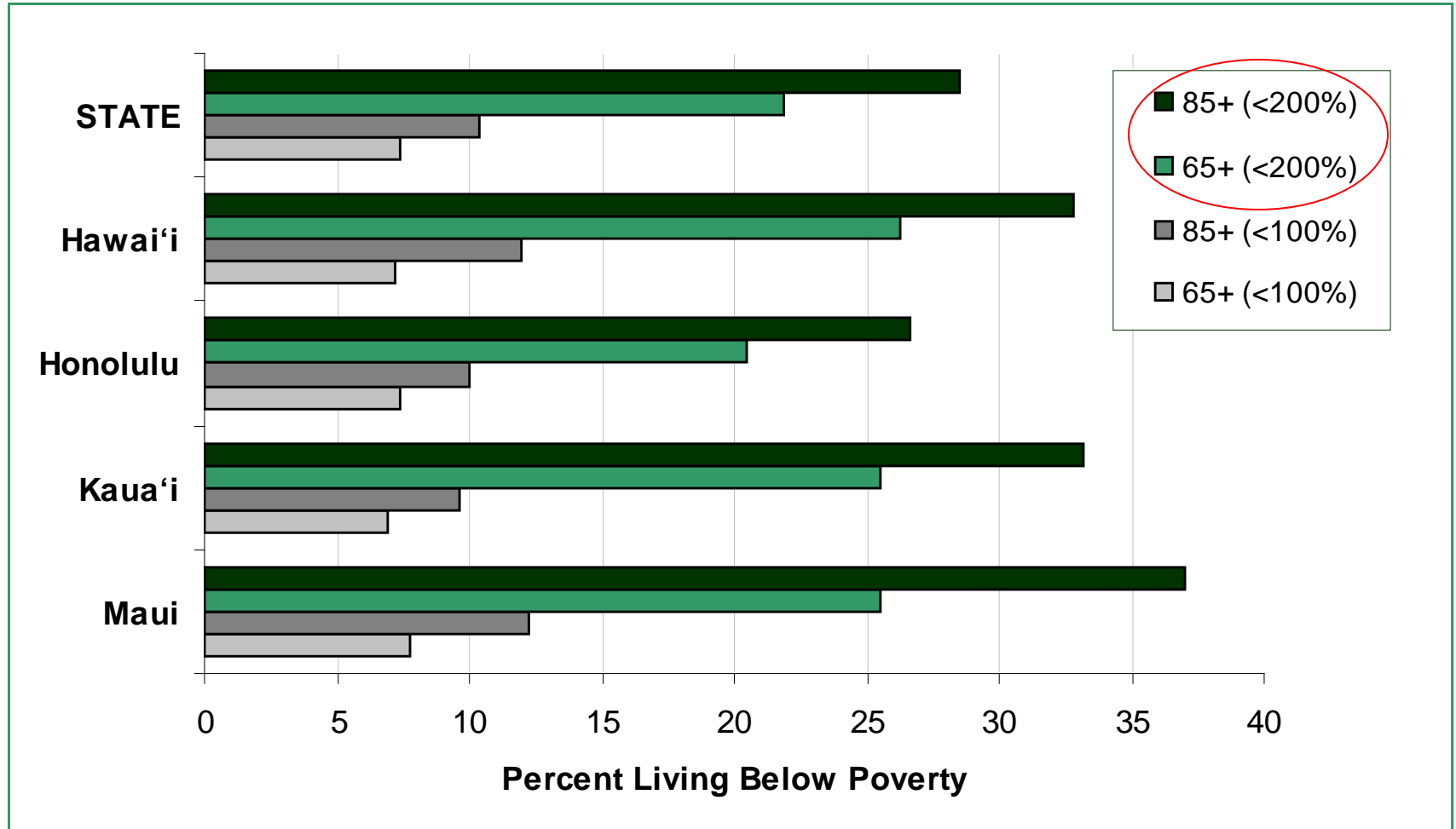
Cost Burden for our Kupuna

Total Medicaid Costs per Selected Chronic Disease, US and Hawai'i by Age, 2007

Group	High Blood Pressure	Diabetes	Heart Disease	Cancer
US overall	\$16,183,936,000	\$12,415,769,000	\$4,714,560,000	\$2,088,373,000
Hawaii Overall	\$59,708,000	\$52,179,000	\$20,755,000	\$9,082,000
Age 18-44	\$4,690,000	\$7,846,000	\$4,064,000	\$2,650,000
Age 45-64	\$10,582,000	\$16,999,000	\$7,886,000	\$2,691,000
Age 65+	\$44,436,000	\$27,333,000	\$8,805,000	\$3,740,000

Source: Chronic Disease Cost Calculator, Centers for Disease Control and Prevention, National Center for Chronic Disease Prevention and Health Promotion (NCCDPHP). Available at: <http://www.cdc.gov/chronicdisease/resources/calculator/index.htm>.

Individuals 65+ & 85+ Living Below Poverty, Hawai'i, 2004



Source: Census Bureau. (2004, October). Census 2000 special tabulation on aging (STP 9), P88: Age by ratio of income in 1999 to poverty level.

Cost Burden of Long-Term Care

Selected Nursing Home Indicators for by County, 2004

	State	Hawai'i	Oahu	Kaua'i	Maui
Nursing facility bed supply per 1,000 population 65+ (Rate)	24.6	33.6	21.1	38.2	32.7
Nursing facility occupancy rate (%)	91.8%	94.8%	93.5%	74.6%	90.0%
	State	Hawai'i	Oahu	Kaua'i	Maui
Average length of stay in nursing facility (days)	185	179	172	421	222
Nursing facility daily room rate (\$)	\$271.09	\$246.75	\$334.61	\$301.20	\$319.11
AVG LOS X Daily Rate:	\$50,151.65	\$44,168.25	\$57,552.92	\$126,805.20	\$70,842.42

Sources: University of Hawai'i at Manoa, Center on the Family. (2006, January). Special tabulation using Hawai'i State's county population estimates published by U.S. Census Bureau in August 2005 (Dataset: CC-EST2004-alldata-15).

University of Hawai'i at Manoa, Center on the Family. (2006, April). Special tabulation using licensed bed-utilization data published by Hawai'i State Health and Development Planning Agency (Health care utilization report: 2000-2004 data).

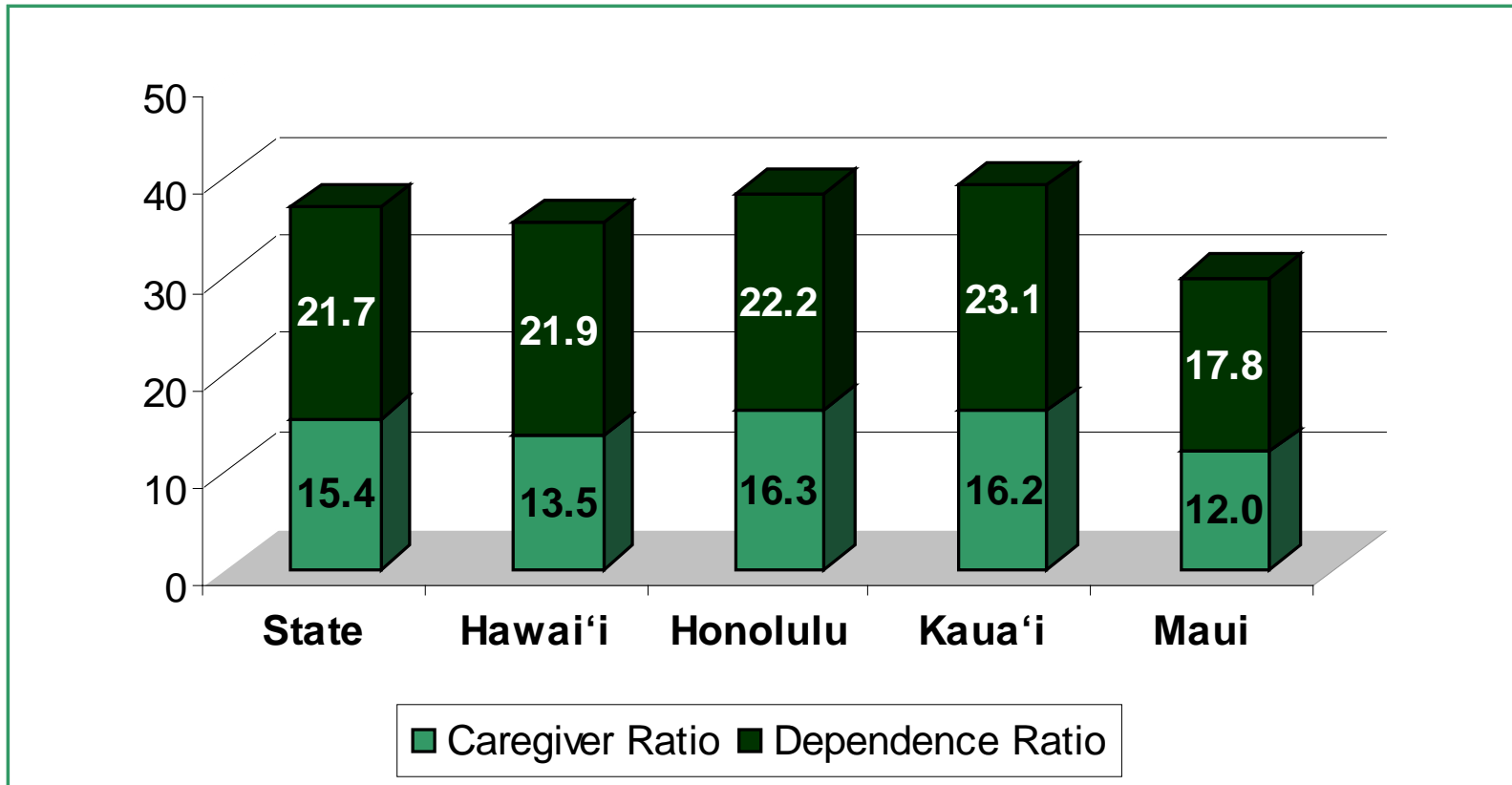
Available at: http://uhfamily.hawaii.edu/cof_data/aging/selectIndicator.asp?subjectID=11&domainID=1.

Got Aging in Place?

- ❑ **Nearly 90 percent of seniors want to stay in their own homes as they age**
- ❑ **Even if they begin to need day-to-day assistance or ongoing health care during retirement, most (82 percent) would prefer to stay in their homes**
- ❑ **Hawai'i leads nation in multigenerational homes**

Caregiver Burden

Caregiver and Dependence Ratio by County, 2004

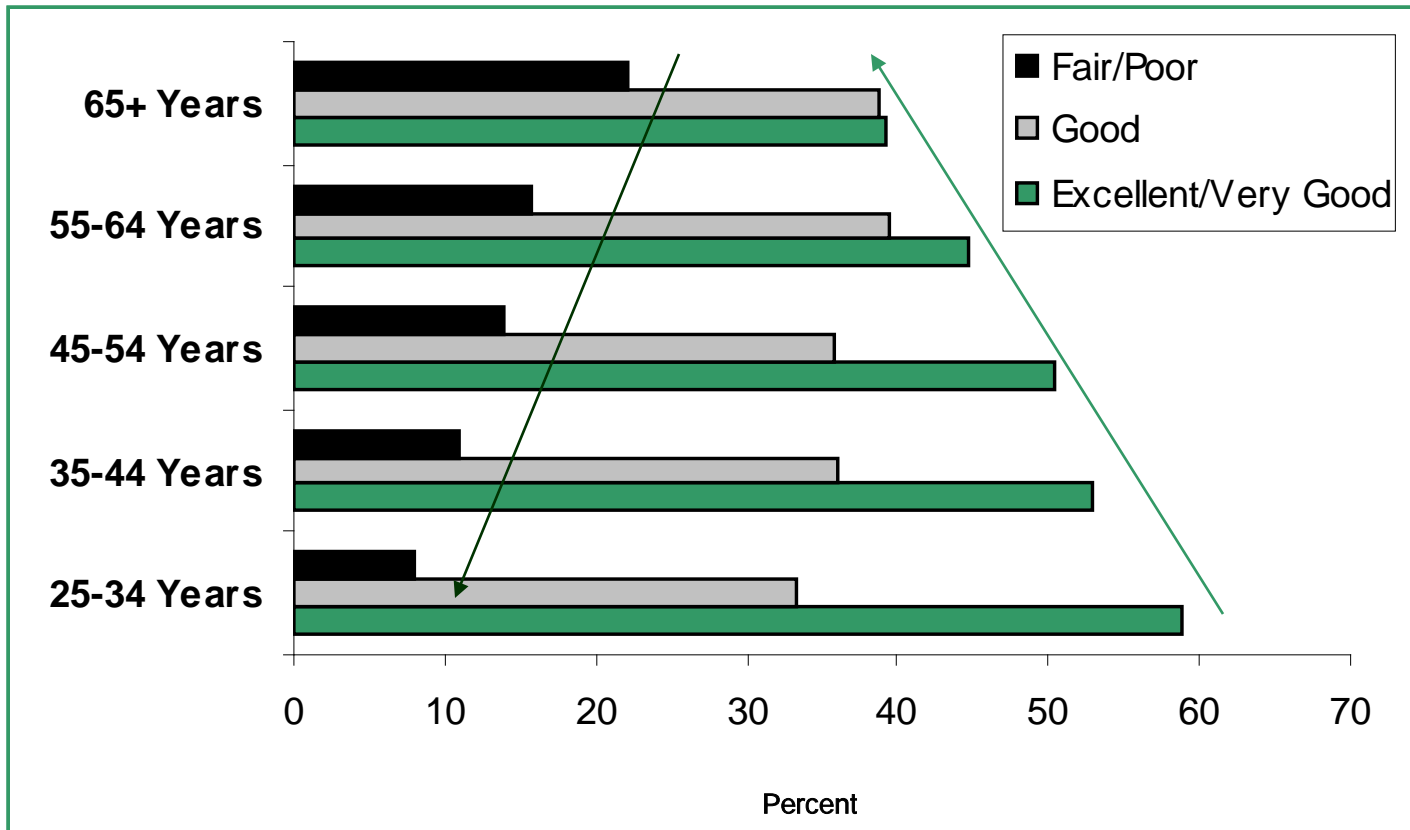


Sources: University of Hawai'i at Manoa, Center on the Family. (2006, January). Special tabulation using Hawai'i State's county population estimates published by U.S. Census Bureau in August 2005 (Dataset: CC-EST2004-alldata-15).

University of Hawai'i at Manoa, Center on the Family. (2006, January). Special tabulation using Hawai'i State's county population estimates published by U.S. Census Bureau in August 2005 (Datasets: CC-EST2004-alldata-15; CC-EST2004-agesex-15).

Living Longer, worse Health

Age by Self-Reported Health Status, Hawaii, BRFSS 2009



Source: Behavioral Risk Factor Surveillance System, 2008, 2009

Summary:

- ❑ Hawai‘i’s Kupuna are living longer, with women living longer than men;
- ❑ Cancer, heart disease, and stroke are the top 3 causes of death for Hawai‘i’s Kupuna;
- ❑ Physical disability increases with age, while physical activity decreases with age;
- ❑ More and more of our Kupuna are living in poverty – with almost 30% of those 85+ living below 200% of the poverty line. The poorest of the poor!

What's Next?



Photo Credit: http://www.seniorbrigade.com/health_care/images/Seniors12_000.jpg

Discussion Time!



Mahalo!

- **Ann Pobutsky, Chronic Disease Epidemiologist, Chronic Disease Management and Control Branch**
- **Danette Wong Tomiyasu, Chief, Chronic Disease Management and Control Branch**
- **Florentina Reyes-Salvail, Hawaii Behavioral Risk Factor Surveillance Survey (BRFSS)**
- **The CDMCB Staff and Chronic Disease Burden Report Advisory Committee.**

