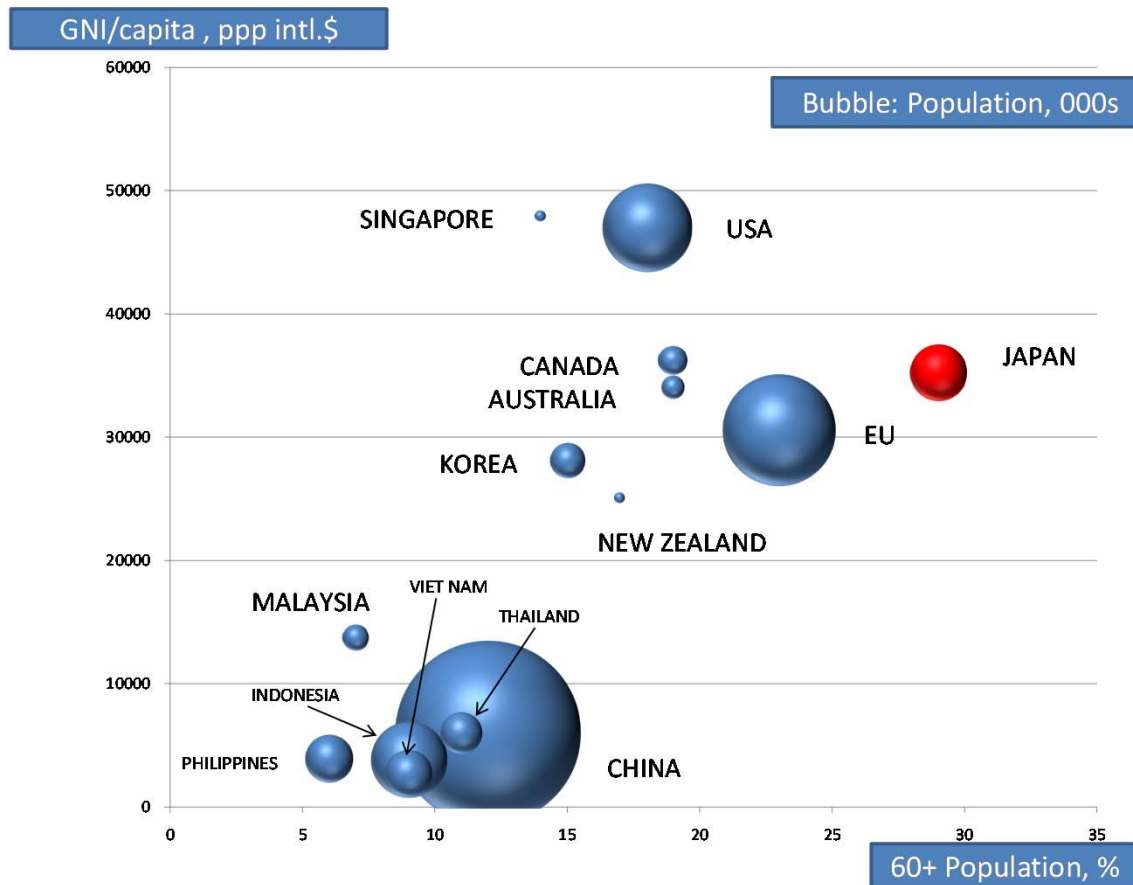


The Locus and Challenge in Japanese Aging Policy

Takeo Ogawa, PH.D.

Emeritus Professor, Kyushu University
Professor, Kumamoto Gakuen University
Trustee, Asian Aging Business Center

Wealth, Aging, Population

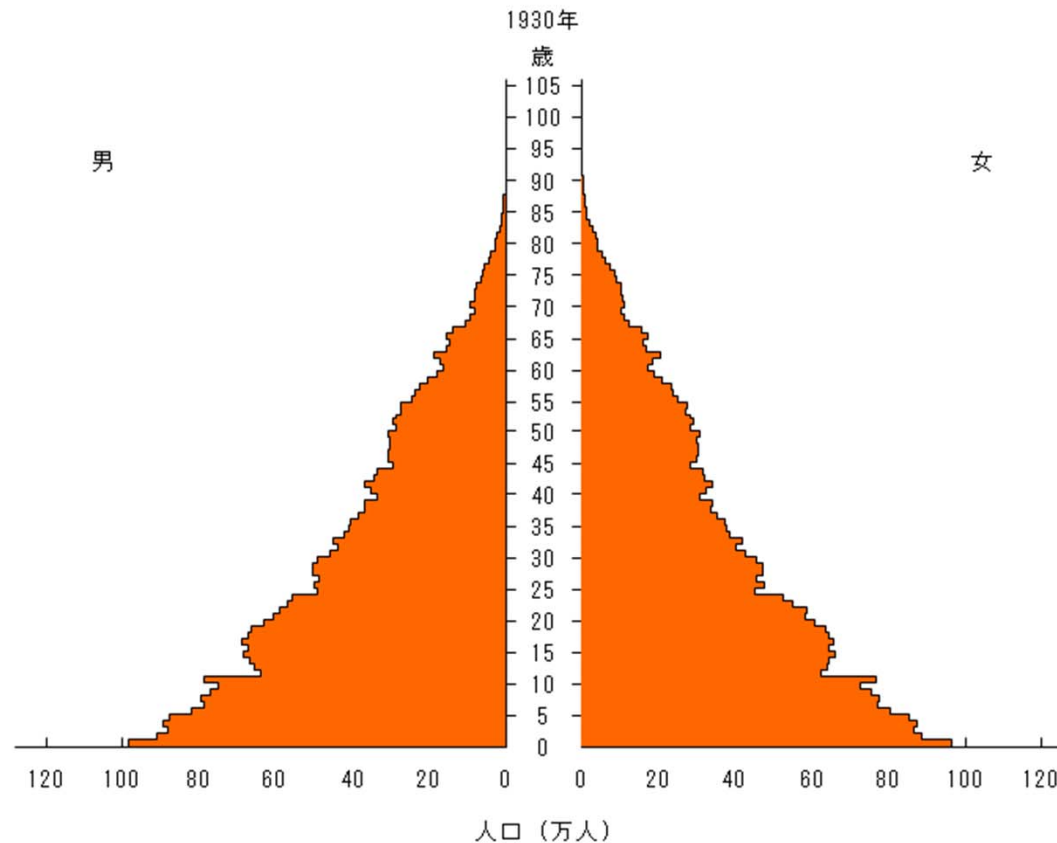


WHO, 2010, World Health Statistics 2010, Demographic and Socioeconomic Statistics .

Aging Japan

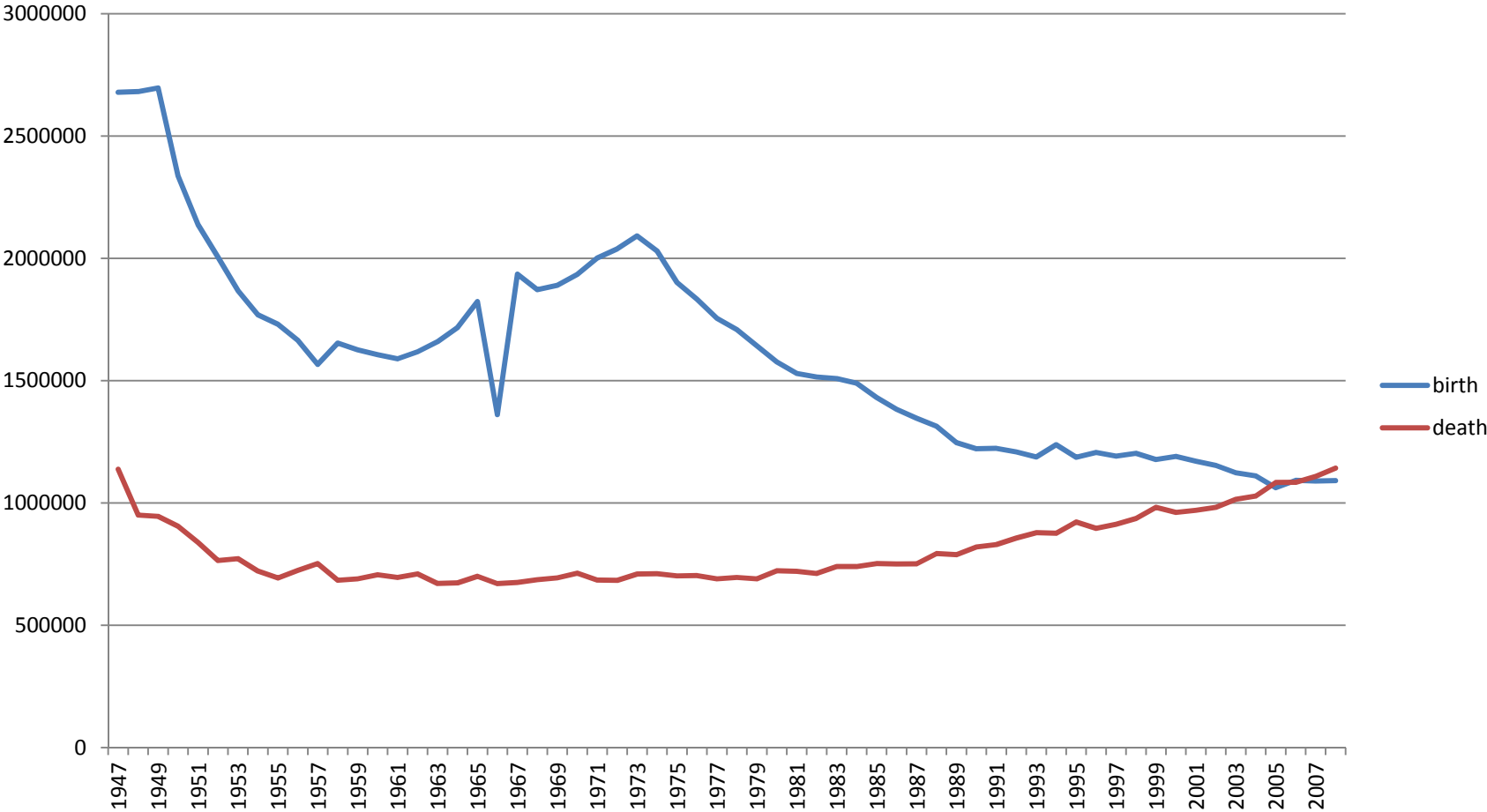
- Japan is the highest aged country in the world.
- Japan is going on the second demographic transition.
- Japan has already exhausted the demographic bonus.
- Japan has encountered with decreasing population.

Changing Demographic Pyramid? 1930-2055



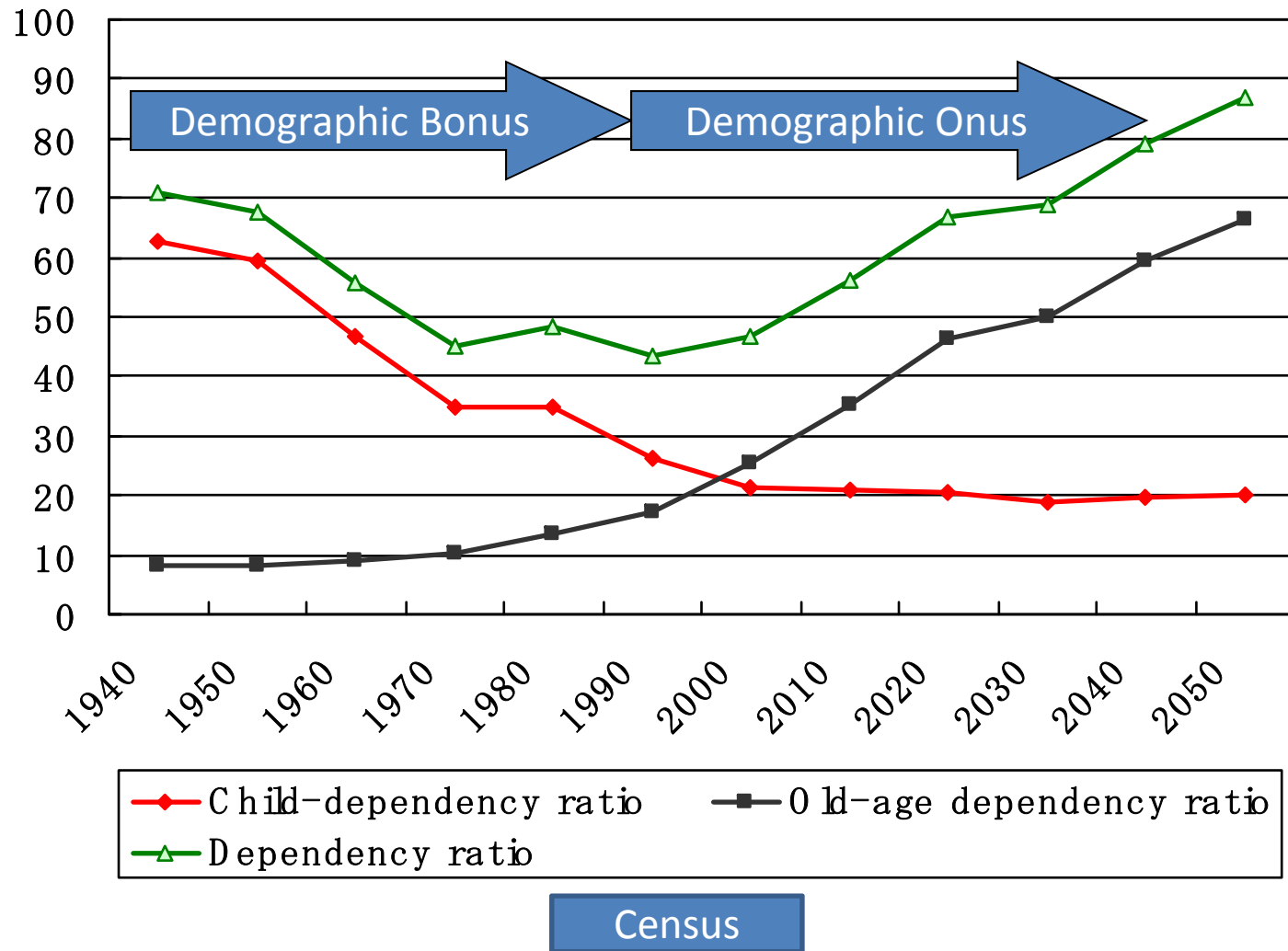
国立社会保障・人口問題研究所
National Institute of Population and Social Security Research

Transition of Birth and Death



National Institute of Population and Social Security Research

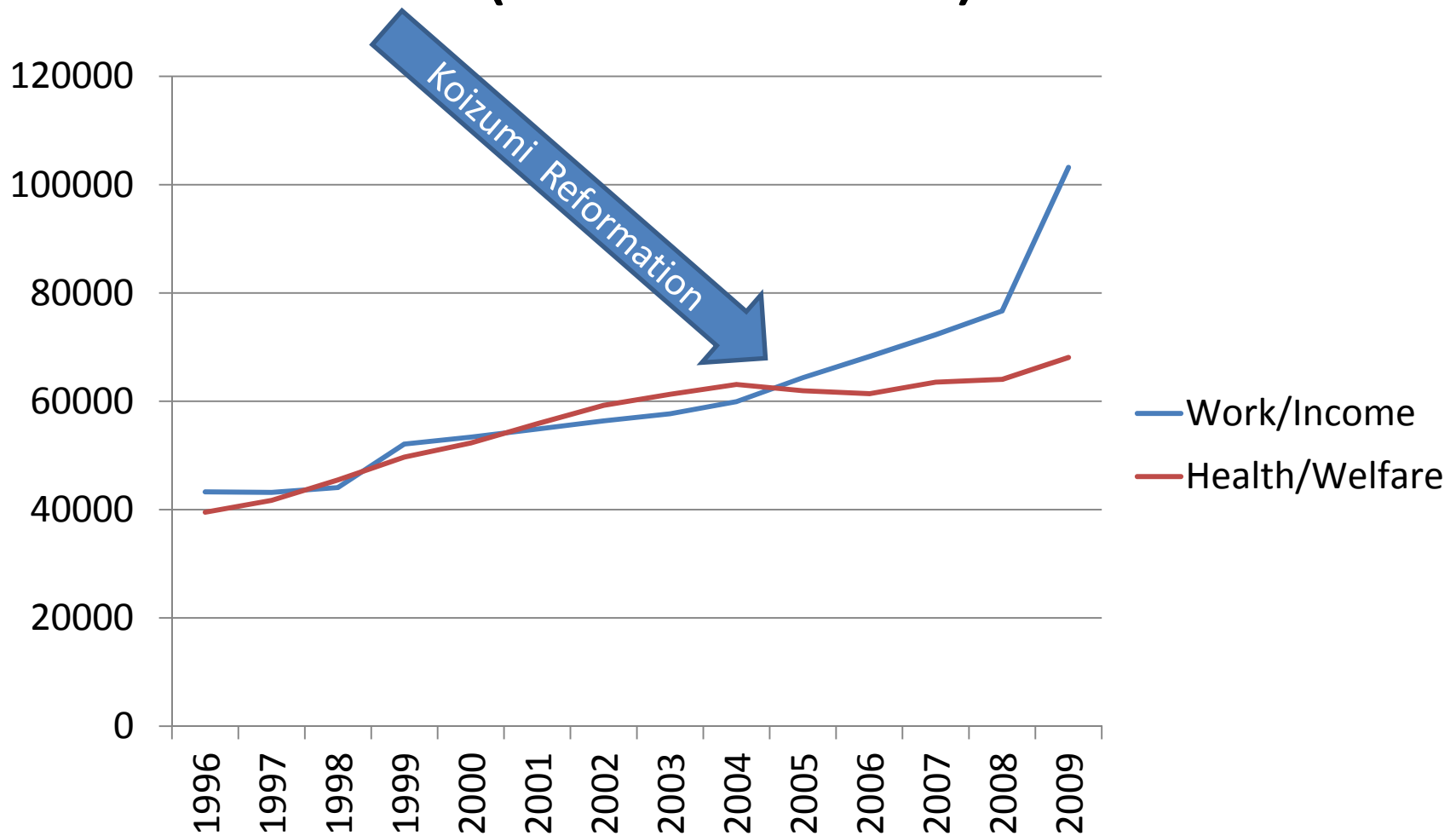
Changing Dependency Ratio



The Basic Law on Measures for the Aged Society since 1995

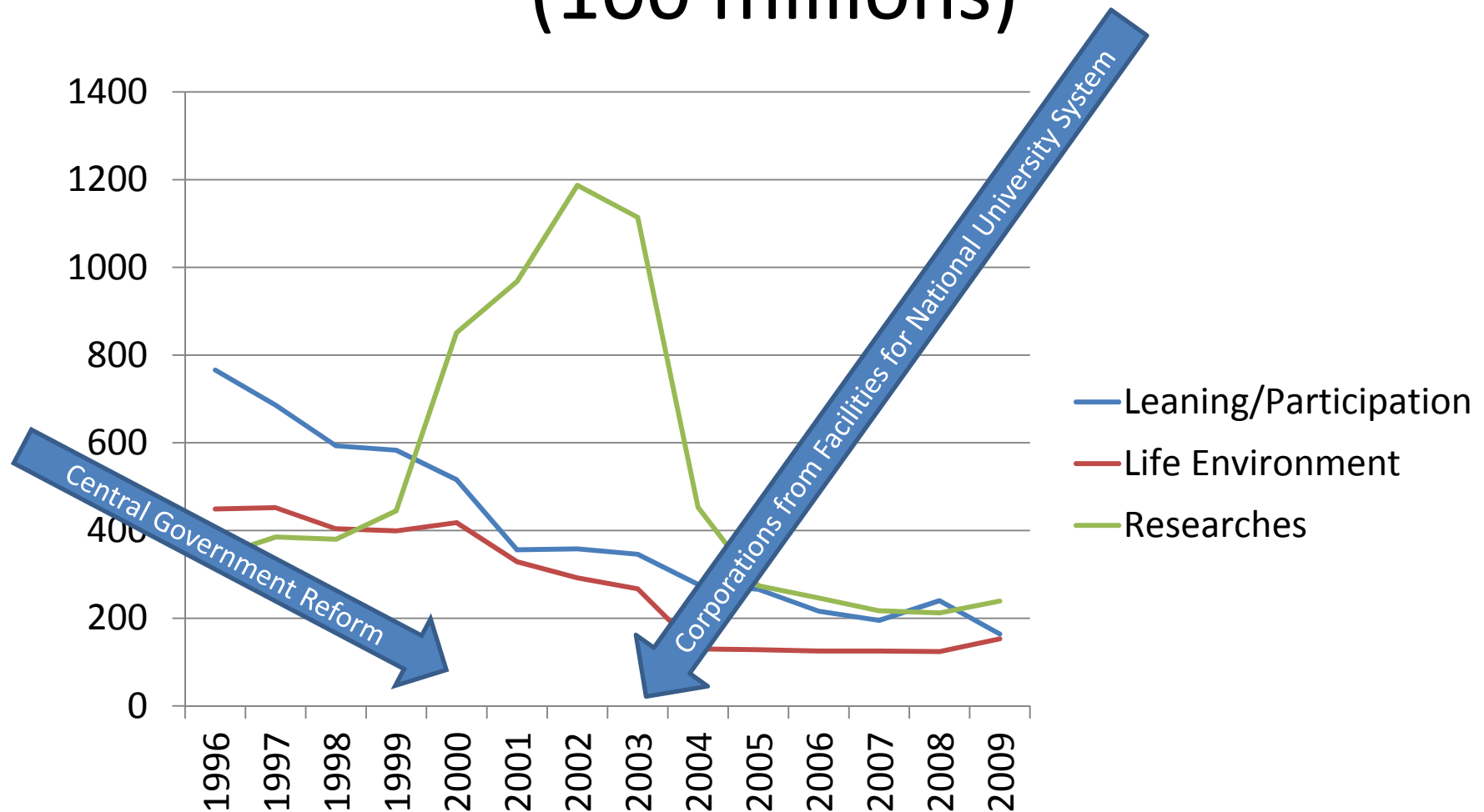
- Working and Income
- Health and Welfare
- Learning and Participation
- Living Environment
- Promoting Research

National Budgets for Aging Policies 1 (100 millions)



The Cabinet Office, 2010. White Paper on Aged Society.

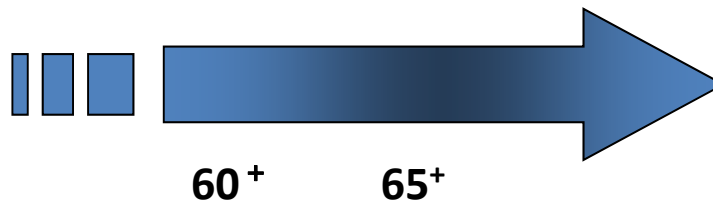
National Budgets for Aging Policies 2 (100 millions)



The Cabinet Office, 2010. White Paper on Aged Society.

Challenges on Working and Income

- The universal public pension system was established in 1961.
- Who will be able to support coming aged society?
Young generations?
Females?
Older persons?
Foreigners?
- How will be able to pay premiums and tax?



賃金 Wage	?	厚生年金・共済年金 Employee Pension/Mutual Aid Association Pension
		老齢基礎年金 National Pension

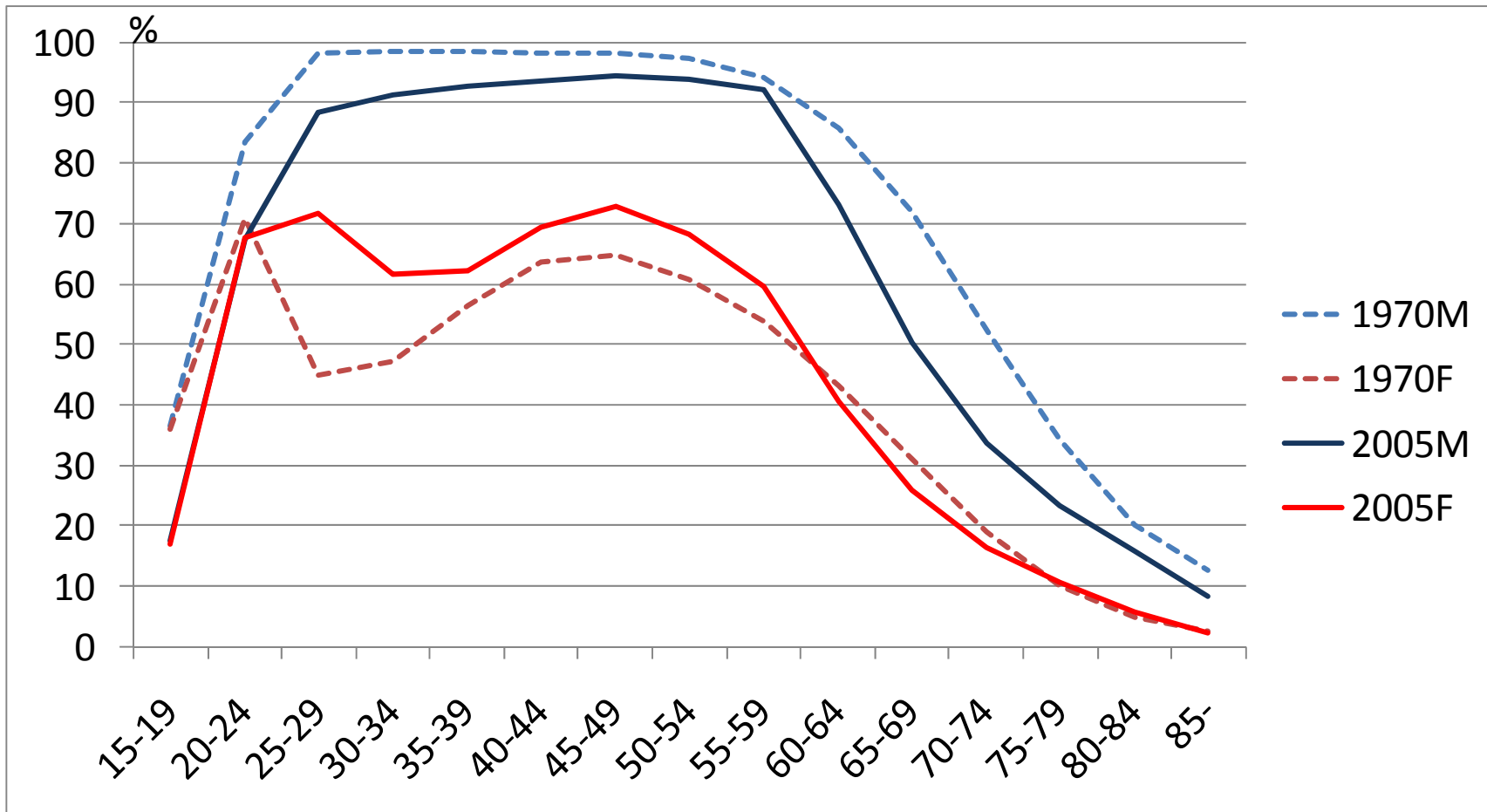
賃金 Wage	雇用 保険	賃金 Wage	?	厚生年金・共済年金 Employee Pension/Mutual Aid Association Pension
				老齢基礎年金 National Pension

主婦 Housewife	老齢基礎年金 National Pension
--------------	-------------------------

自営・家族従事者 Self-employed	国民年金基金 Additional Pension
	老齢基礎年金 National Pension

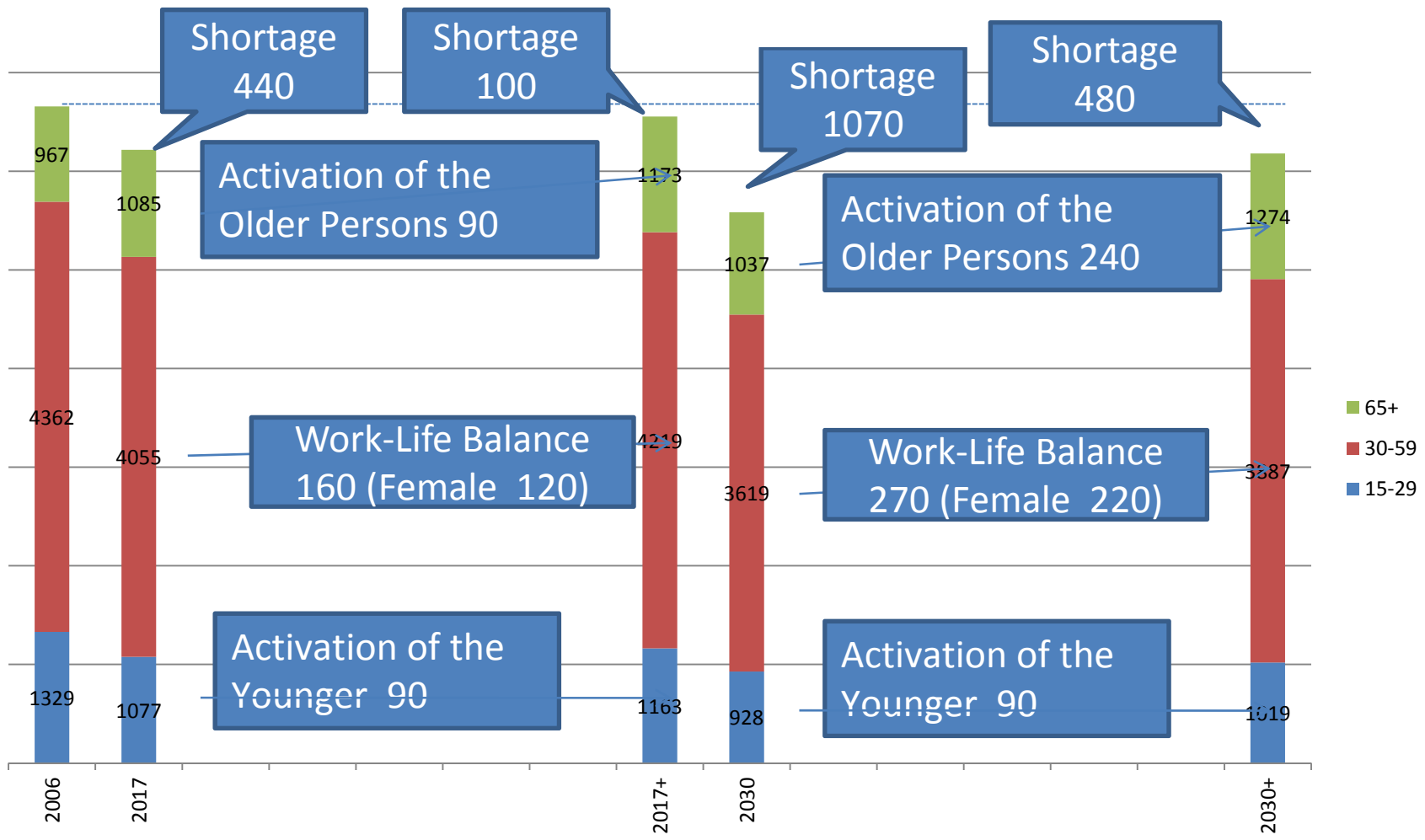
生活保護 Public Assistance

Labor Force by Age



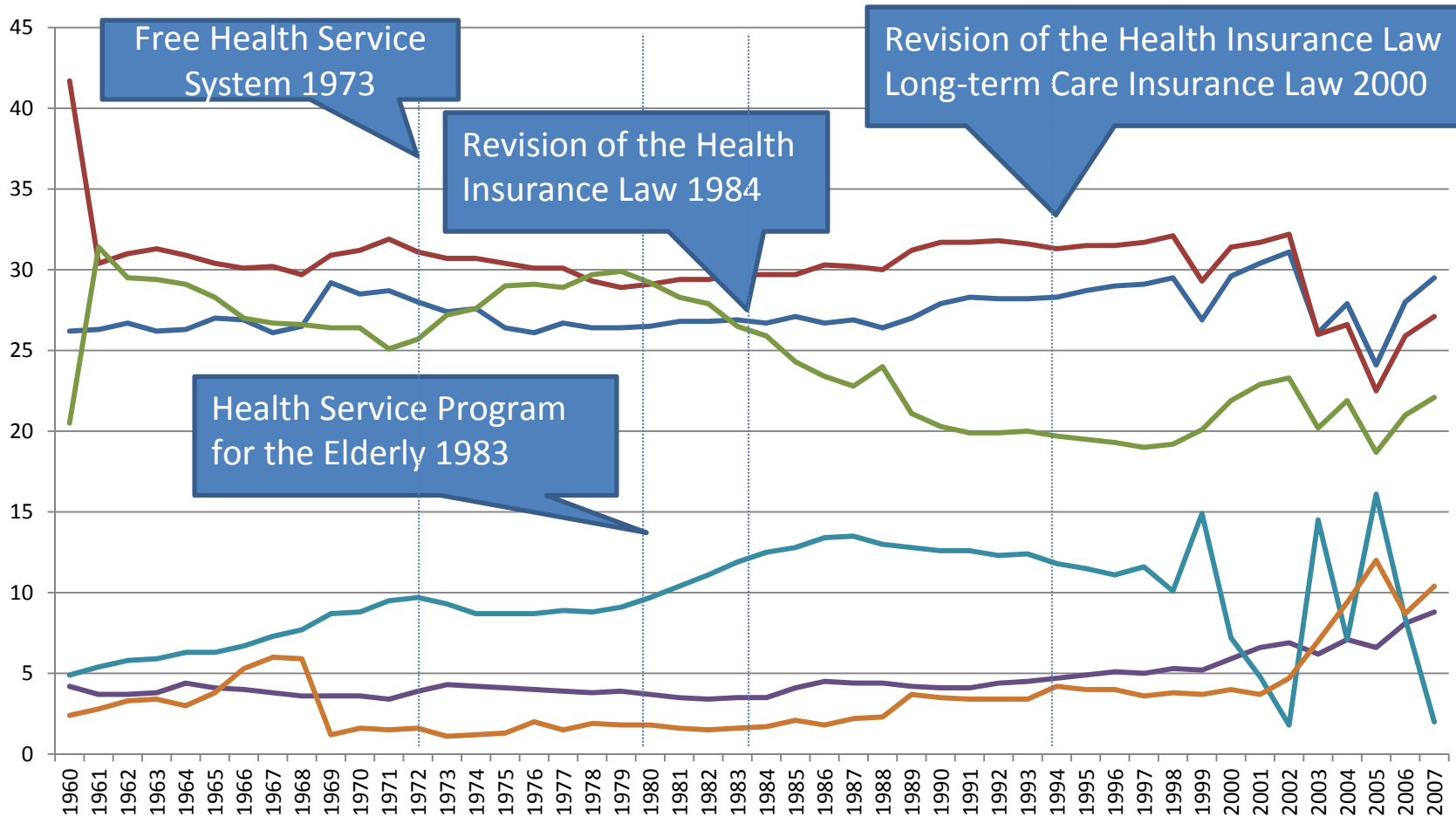
Census, 1970 and 2005

Activation of Labor Force(0,000s)



MHLW, Koyo-Seisaku Kenkyukai, 2007.

The Income of Social Security

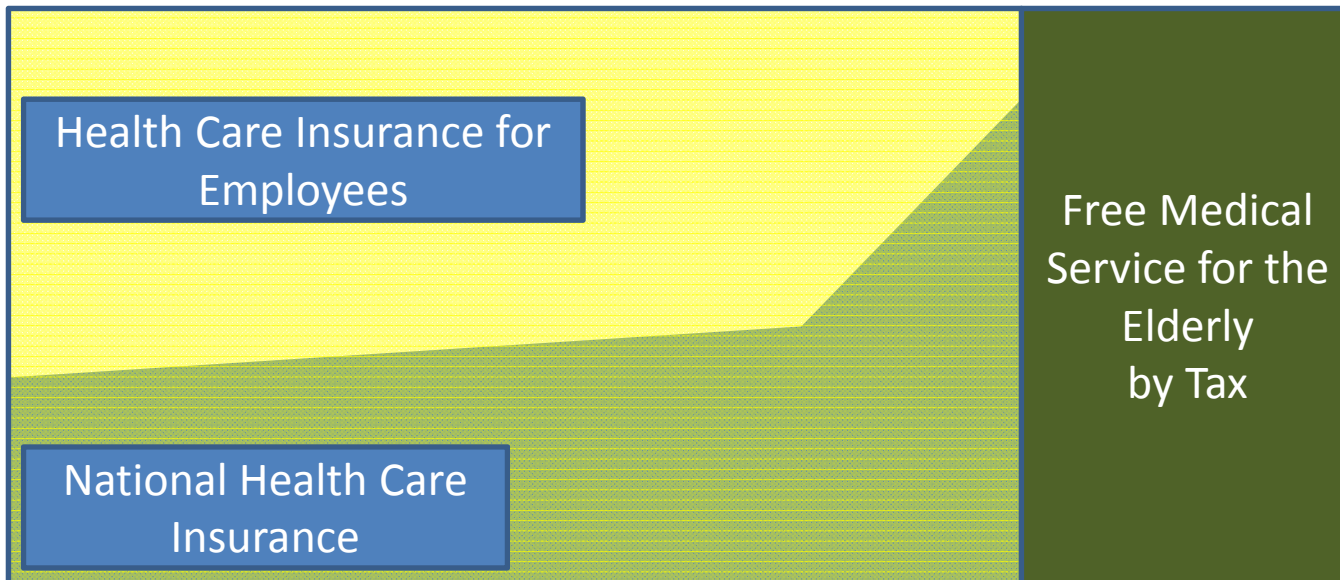
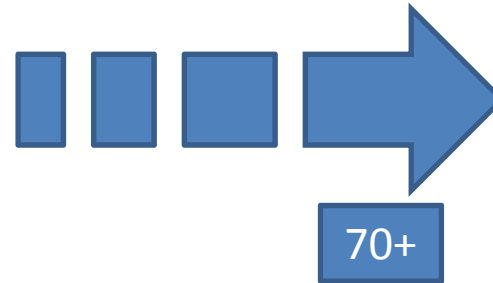


National Institute of Population and Social Security Research

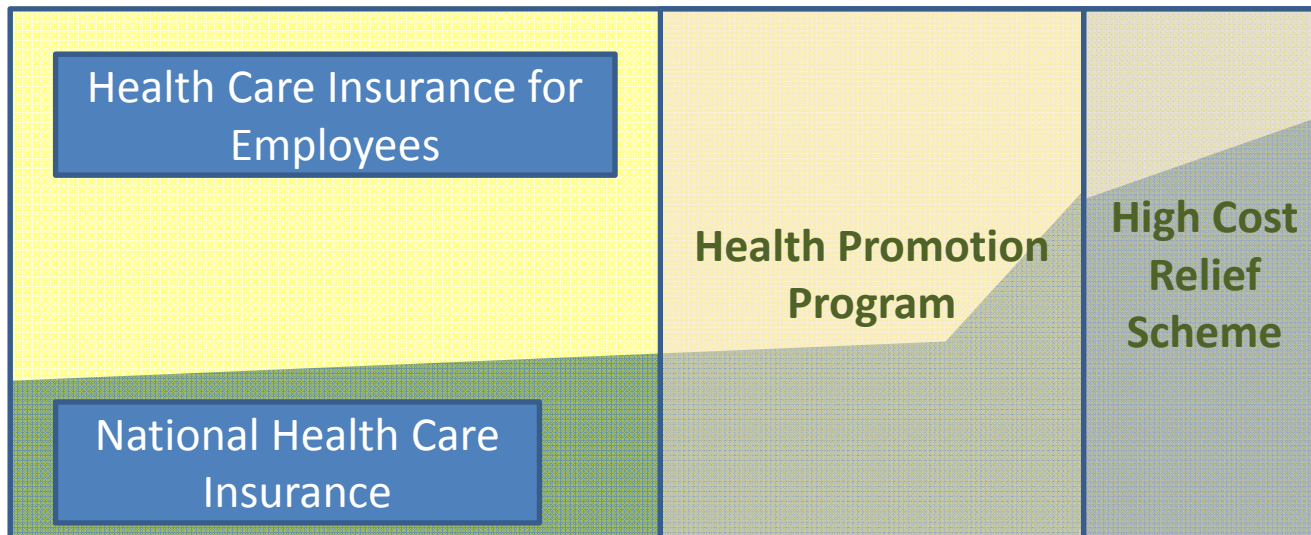
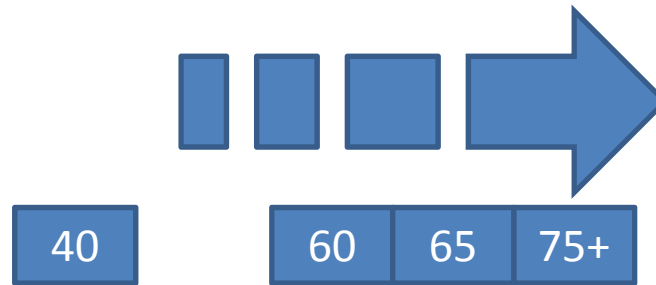
Challenges on Health and Welfare

- The universal public health care insurance system was established in 1961.
- Who will take care for older persons?
 - By themselves?
 - Family (Spouse, Children, Sibling)?
 - Communities (Neighbors, Friends, Volunteers)?
 - Local government?
 - National government?
- Ex-employers?
- How will be able to access to services?

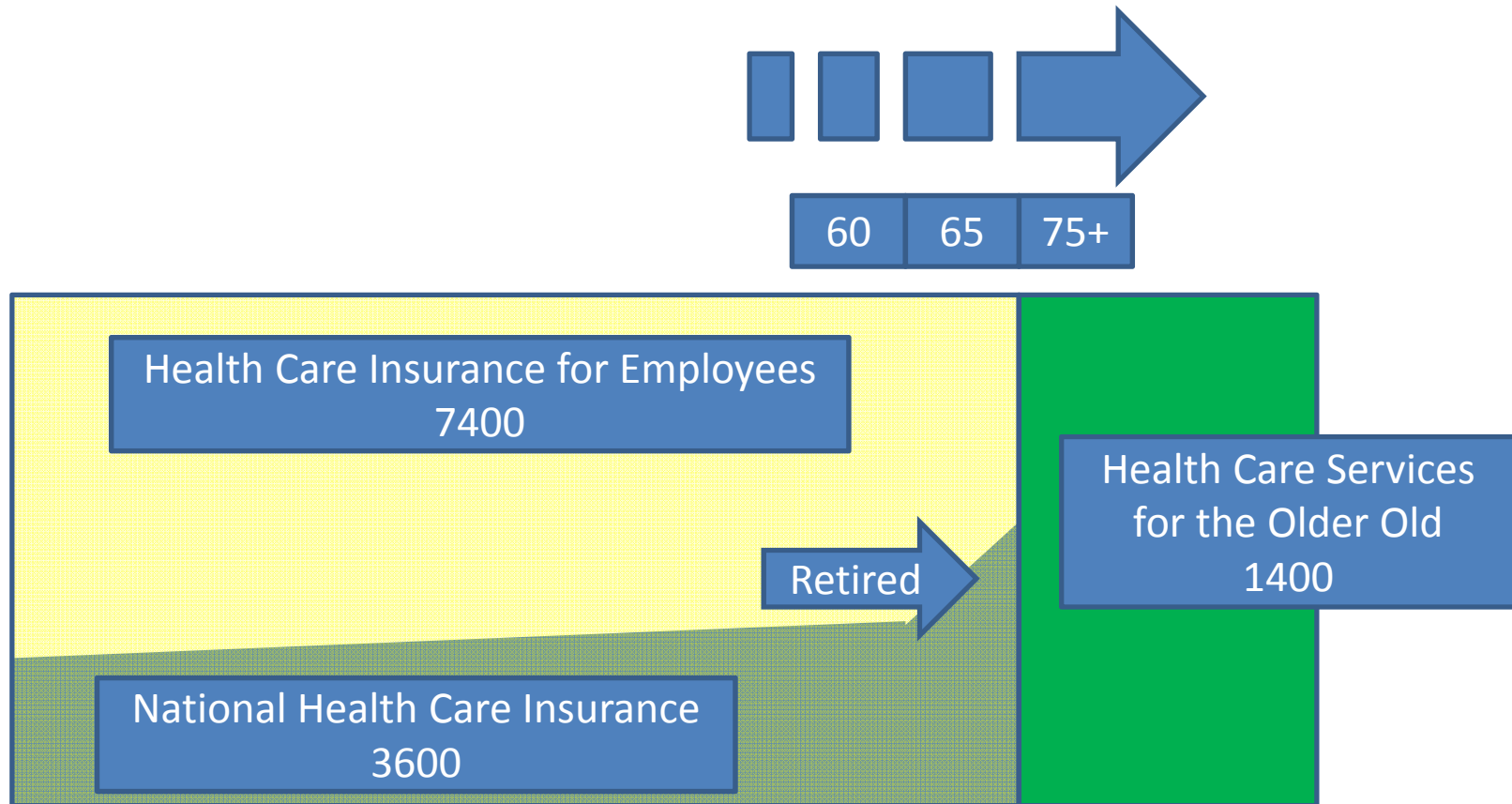
Free Medical Service for the Elderly (1973-1981)



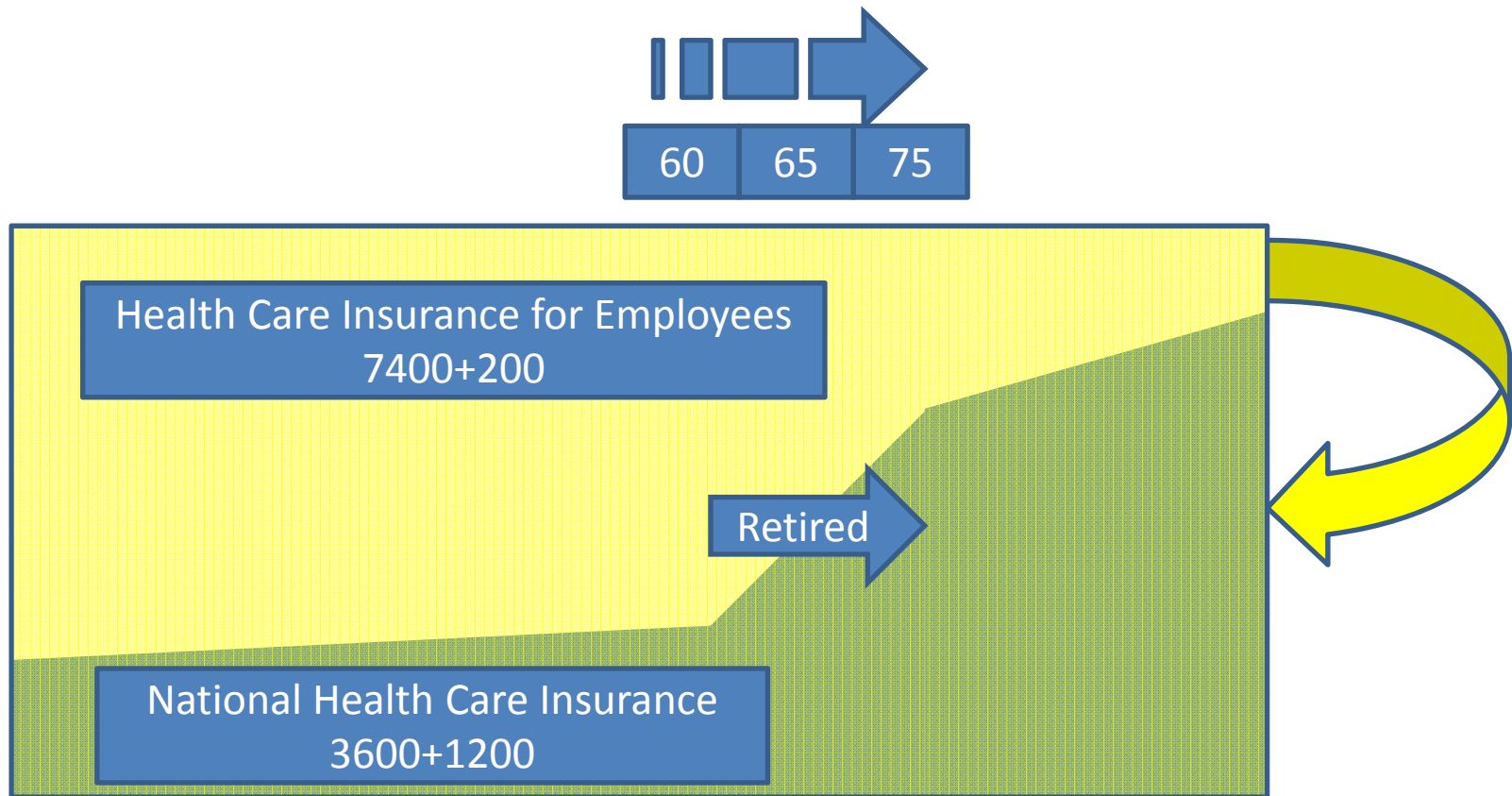
Health Service Program for the Elderly (1982-2007)



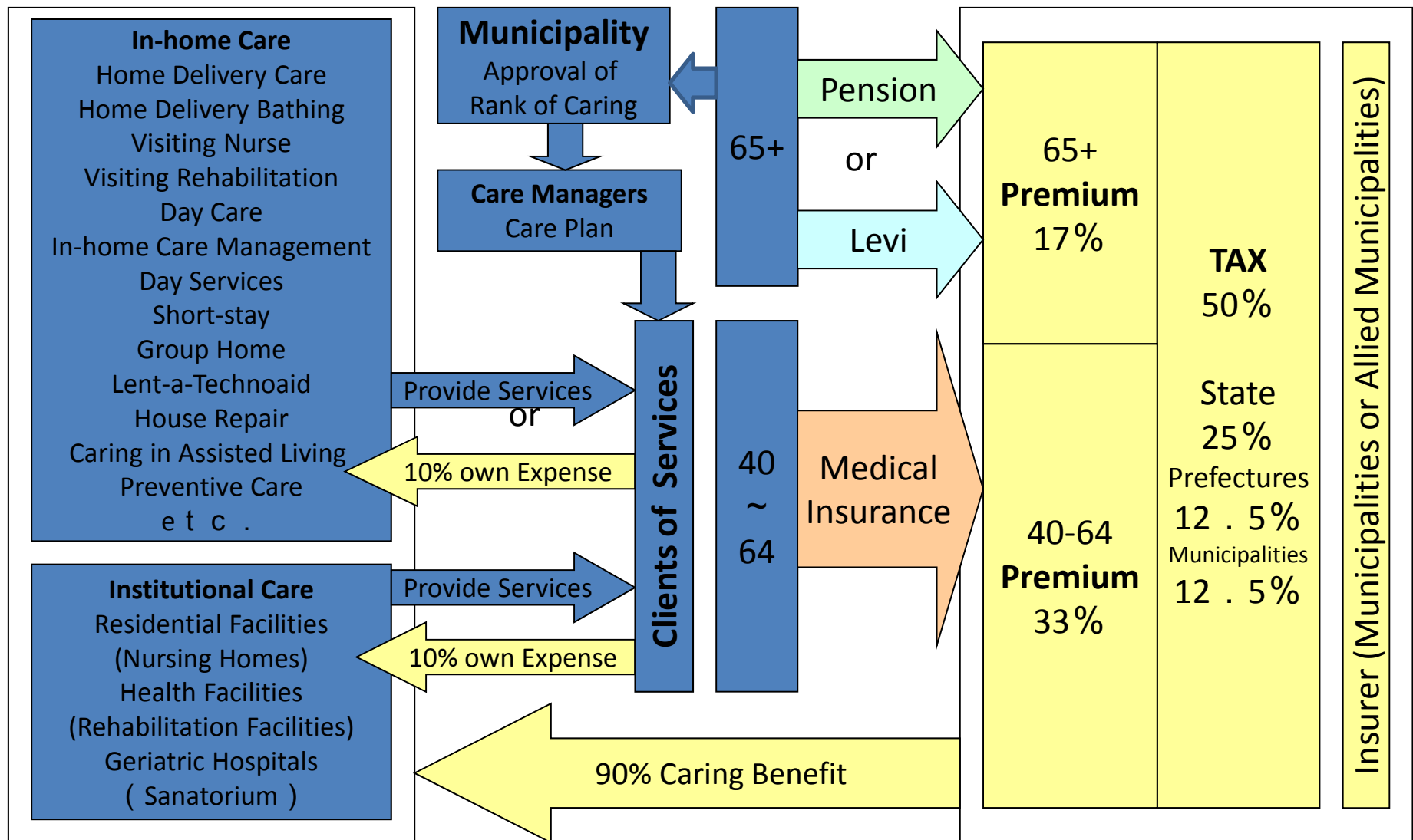
Health Care Service for the Older Old (2008-now)



Reform of Medical and Health Services for the Older Old (under discussion)



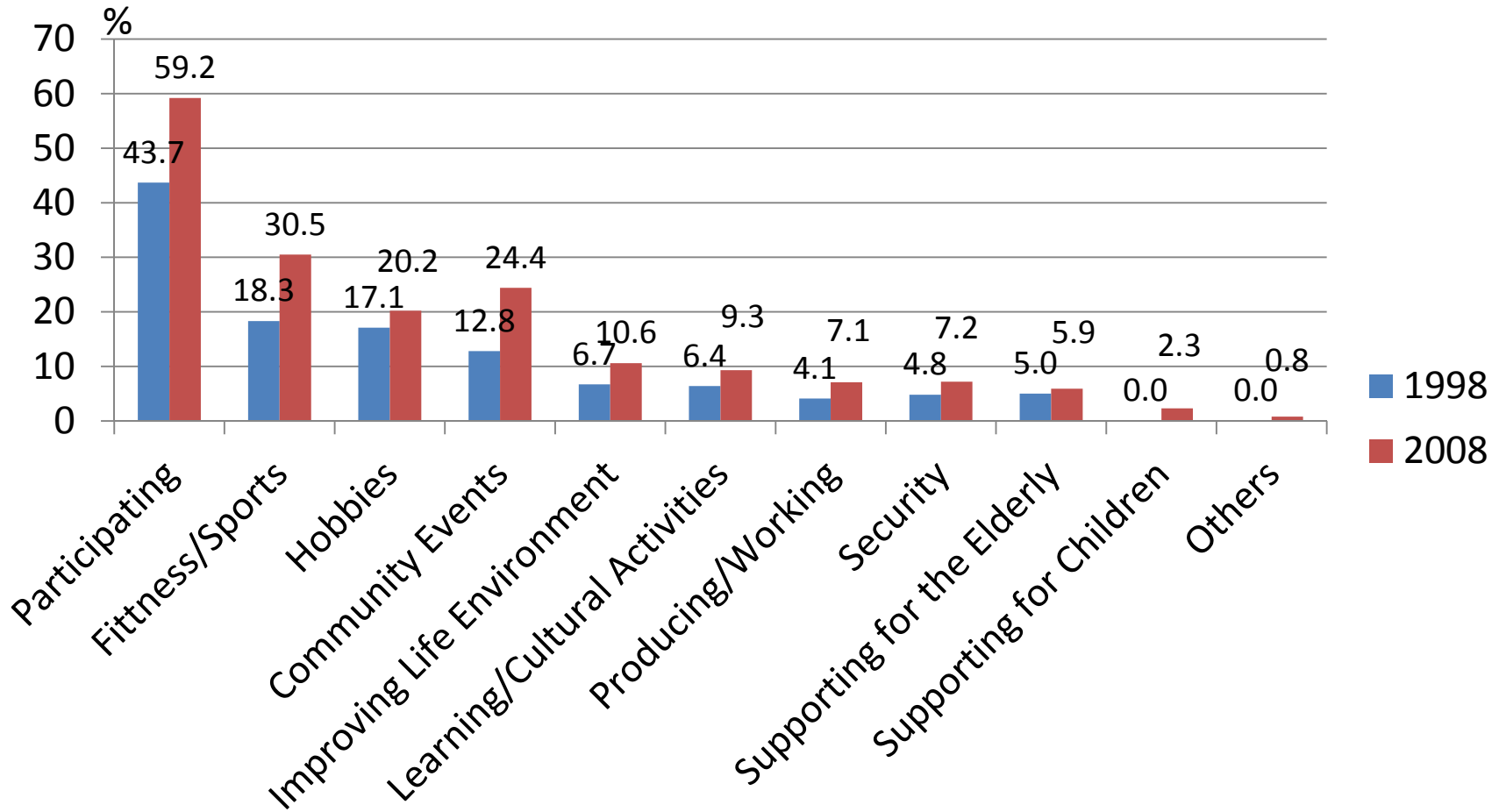
Long-Term Care Insurance System (2000-now)



Challenges on Learning and Participation

- The lifelong education system was established in 1970.
- Who will be able to survive in virtual and real world?
Hands-on?
Reciprocity?
Buying and selling?
Tax and levy?
- What kind of activities do older persons?

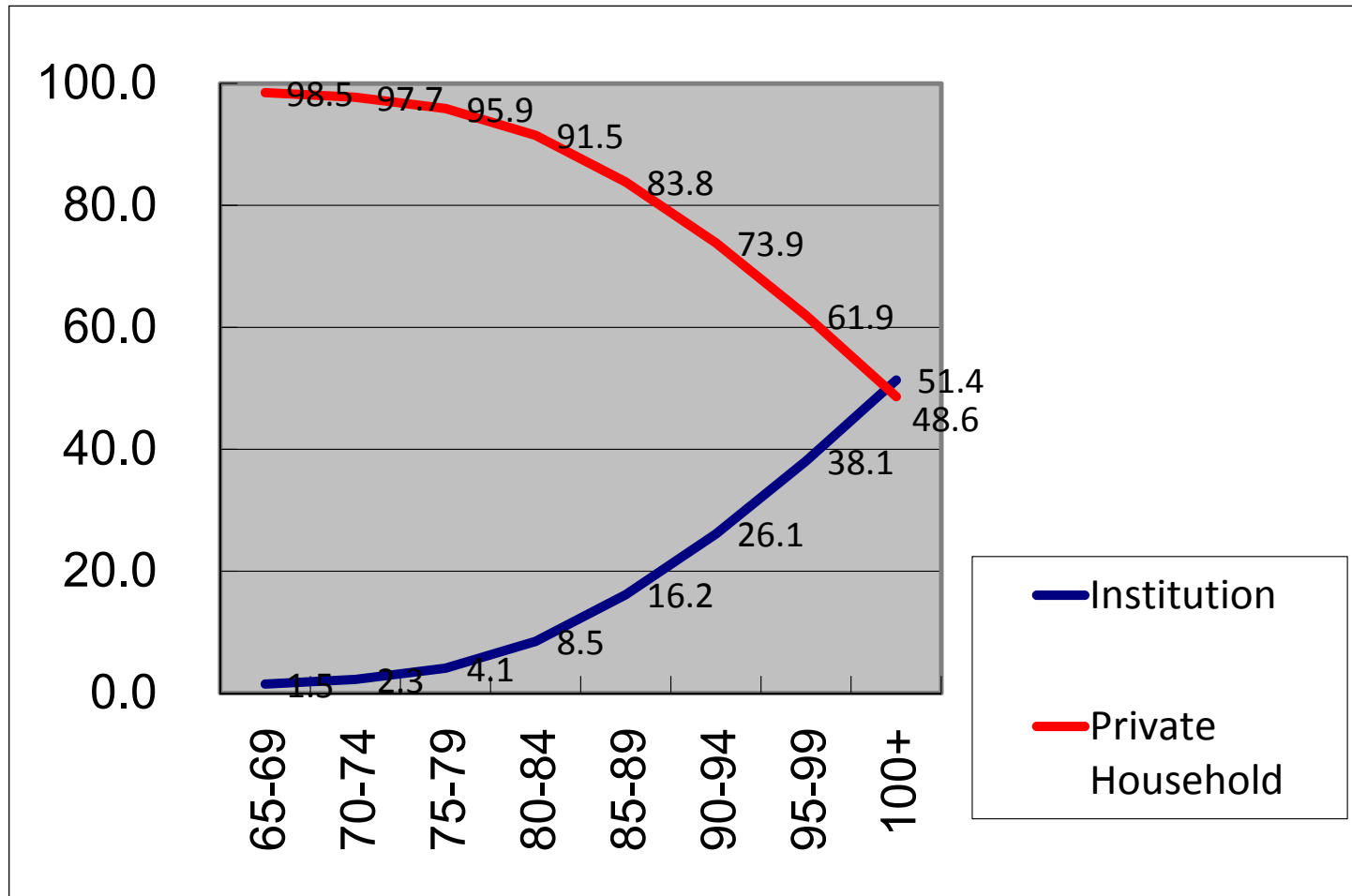
Group Activities by 60+



Challenges on Living Environment

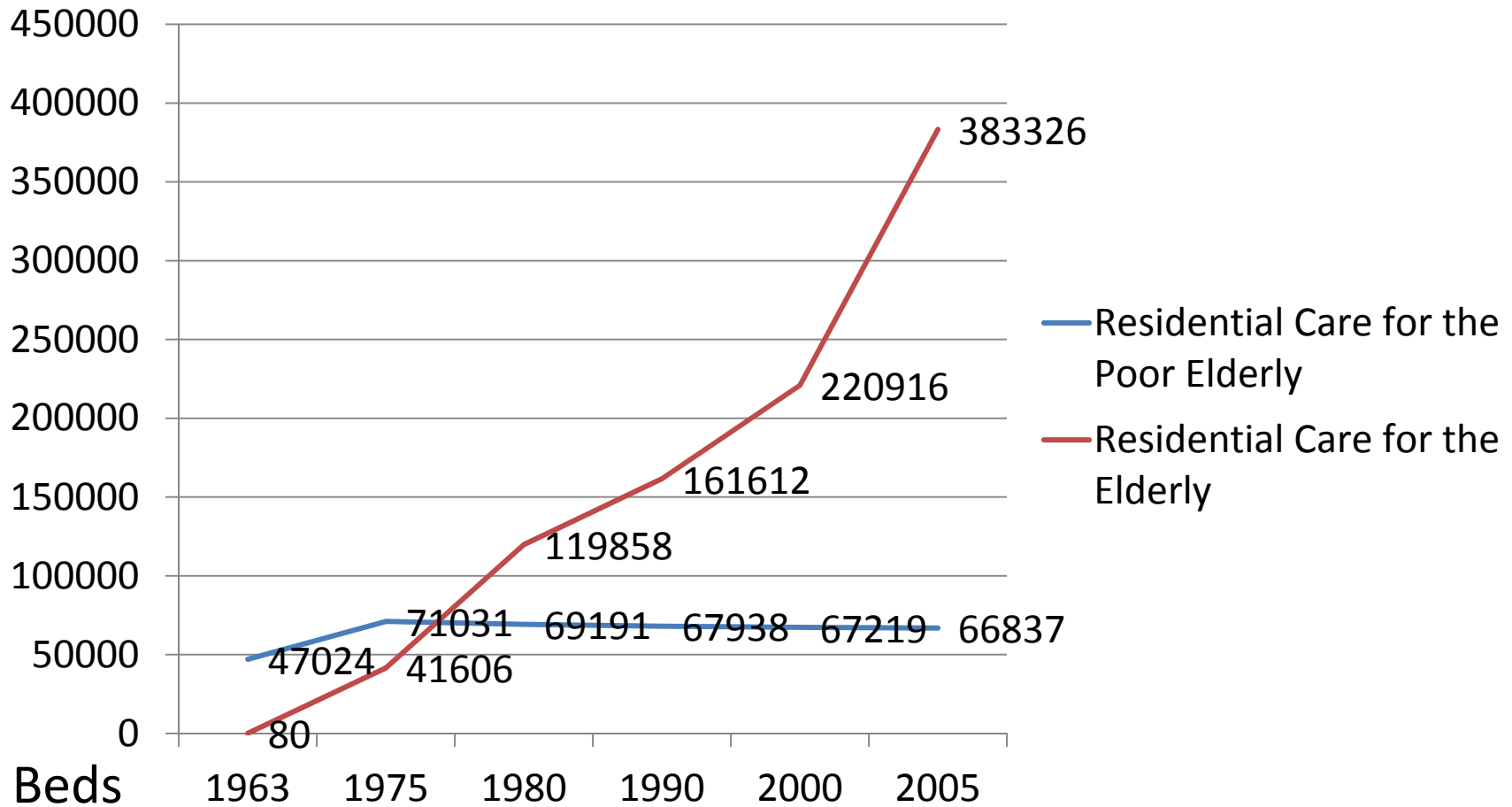
- Public facilities and means of transportation were designed as the barrier-free since 1994 towards the universal design.
- Who will be able to be aging in place?
Those who live with family?
Those who live in ambient assisted livings?
Those who live in age-friendly communities?
Those who live in institutions?
- How do planners be able to design living environment in aged society?

65+ Population Rate in Private Household and Institution/Hospital



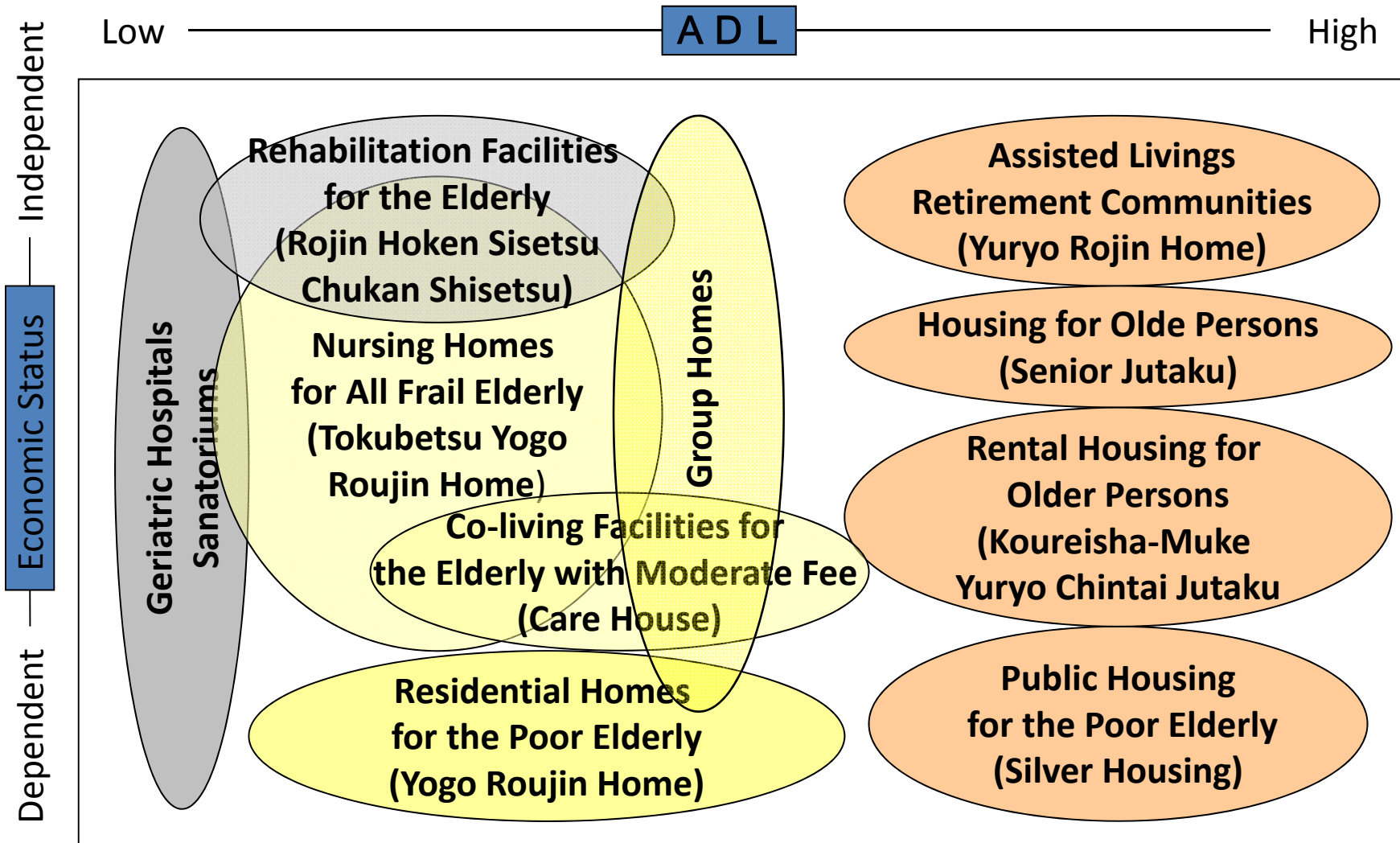
Census 2005

Increasing Residential Care



Japanese Ministry of Health, Labor and Welfare

Diversity of Living for the Elderly



Challenges on Promoting Research

- Molecular Imaging Studies
- Tailor-made Medicine
- Reclaimed Bone
- Robot System
- Ubiquitous Net Technology
- Driving Safety Support Systems
- Remote Watching System
- Global Standards

Conclusion

- Japanese older persons will challenge more severe situation of active aging. Without mobilization of older persons, Japanese society will not survive anymore. Japanese older persons should support with each other reciprocally by themselves.
- And it will be the future way of your following society too.